

Tuff

Hardware & Fasteners





Post Supports, Timber Connectors, Hinges & Brackets

Post supports

'U' cup stirrup	3
Surface mount stirrup	3
'U' cup bolt-on-tradesman	4
'U' cup bolt-on-concrete	4
'T' blade stirrup	4
'T' blade stirrup, Heavy Duty	5
'T' blade stirrup, Heavy Duty, Adjustable	5
Bolt-on T-Blade, Heavy Duty	5
'T' blade extra heavy duty surface mount	6
Angle type stirrup	6
L-stirrup post support rod stem	6
Tornado stirrup	7
Fish tail stirrup	7
'U' cup stake	8
Centre fix stirrup stake	8
Angle stirrup stake	8
Centre fix type stirrup	9
Saddle type with mount	9
Thin style saddle with mount	9
Colonial bolt down	10
Colonial saddle bracket base only	10
Colonial surround slider base only	10
Colonial two piece split	11
Colonial wet foot	11

Hinges and gate bolts

Ball bearing hinge – tu1	12
Ball bearing hinge – tu1s	12
Ball bearing hinge – tu1b	13
Ball bearing hinge – tu2	13
Ball bearing hinge – tu2a	14
Ball bearing hinge – tu3	14
Ball bearing hinge – tu3p	15
Ball bearing hinge – tu5	15
Ball bearing hinge – tu5a	16
Gate bolts and fixing bracket	16

Timber connectors

Joist support	17
Mini grip	18
Multi grip	18
Triple lock	18
Uni-tie	18
Joist Strap	18
Girder bracket	19
Timberlock	19
Connector Plate	19
Pergola Angle Bracket	19
Cyclone Strap	19
Internal Wall Bracket	20
Batten Tie	20
Plate Tie	20
Sisalation Disk	20
Foil fastener	20
Builder's Punched & Un-punched Strapping (Hoop Iron)	21
Tensioner (Hoop Iron)	21
Heavy duty plate	22
Heavy duty angle	22
HD Angle Bracket	22



Hardware & Fastener Catalogue

Timber connectors *continued*

J-Bolt	23
Pier Bolt	23

Brackets and fence plates

Fence plate 2 hole bracket	24
Fence plate 3 hole bracket	24
Corner bracket	24
Fencing bracket	24
2 hole bent bracket	24
Corner bracket 95	24
Angle bracket 100	25
Angle bracket 75	24
Long heavy duty fascia bracket	25
Extra long heavy duty fascia bracket	25
Fascia angle bracket	26
Rafter strap	26
Bond beam truss bracket 2 hole	27
Roofing Anchor	27
HD Angle bracket with slots	27
Z-bracket	27
D-anchor bracket	28
Mending plate	28
Angle bracket (4 types)	28
Angle bracket with stay (ZP + Galv)	29
Shelf angle bracket (ZP + Galv)	29
Light-use angle bracket (ZP + Galv)	29
Heavy-use angle bracket (ZP + Galv)	30
Angle connector	30
Steel post inner bracket	30
Purlin angle bracket plate	31
Purlin angle bracket (2 types)	31
Stair tread bracket	31
Stair stingers	32

Fasteners

Cyclone Rod and Products

<i>Advans-Xtracote</i> (zinc) threaded rod	34
Coupler	34
Galvanised threaded rod	35
Hexagon nut	35
Round washer	36
Square washer	36
Starter bar	37
Offset anchor bolt	37
Straight shank anchor bolt	37
Tie Down Rod	38

Standard Terms and Conditions	39
--------------------------------------	----

Warranty	40
-----------------	----



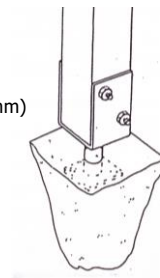
'U' cup stirrup – M12 Bolt Hole Base – Ø13.5mm Hole



Product Code	Post Size	Shaft Height	Finish Type	Std Carton Qty	Barcode Number
F11240	75mm	75mm	Hot Dip Galv	20	9314691112401
F11720	75mm	150mm	Hot Dip Galv	10	9314691807789
F11721	75mm	200mm	Hot Dip Galv	10	9314691807796
F11722	75mm	300mm	Hot Dip Galv	10	9314691807802
F11723	75mm	450mm	Hot Dip Galv	10	9314691807819
F11724	75mm	600mm	Hot Dip Galv	10	9314691807826
F11241	90mm	75mm	Hot Dip Galv	20	9314691112418
F11273	90mm	130mm	Hot Dip Galv	20	9314691112739
F11770	90mm	150mm	Hot Dip Galv	10	9314691804306
F11271	90mm	200mm	Hot Dip Galv	20	9314691112715
F11275	90mm	300mm	Hot Dip Galv	10	9314691112753
F11772	90mm	375mm	Hot Dip Galv	10	9314691804320
F11756	90mm	450mm	Hot Dip Galv	10	9314691117567
F11761	90mm	600mm	Hot Dip Galv	10	9314691117611
F11242	100mm	75mm	Hot Dip Galv	20	9314691112425
F11274	100mm	130mm	Hot Dip Galv	20	9314691112746
F11771	100mm	150mm	Hot Dip Galv	10	9314691804313
F11272	100mm	200mm	Hot Dip Galv	20	9314691112722
F11773	100mm	250mm	Hot Dip Galv	10	9314691804337
F11276	100mm	300mm	Hot Dip Galv	10	9314691112760
F11774	100mm	375mm	Hot Dip Galv	10	9314691804344
F11757	100mm	450mm	Hot Dip Galv	10	9314691117574
F11762	100mm	600mm	Hot Dip Galv	10	9314691117628
F12044	115mm	200mm	Hot Dip Galv	20	9314691120444
F12045	115mm	300mm	Hot Dip Galv	10	9314691120451
F11777	115mm	375mm	Hot Dip Galv	10	9314691804375
F11775	115mm	450mm	Hot Dip Galv	10	9314691804351
F11776	115mm	600mm	Hot Dip Galv	10	9314691804368
F11243	125mm	75mm	Hot Dip Galv	20	9314691112432
F12051	125mm	200mm	Hot Dip Galv	20	9314691120512
F12052	125mm	300mm	Hot Dip Galv	10	9314691120529
F11244	150mm	75mm	Hot Dip Galv	20	9314691112449

Notes:

- Ideal for pergola, carport and verandah posts
- Primarily used for bolting to existing timber decking or concrete base
- Unique termite resistant design
- Extra heavy duty - made from 4mm steel + heavy duty extra weight bearing shaft (OD - Ø25mm)
- Side height = 105mm
- Hot dip galvanised
- M12 bolt hole size



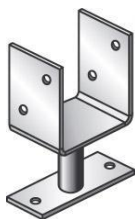
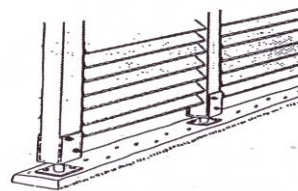
Surface mount stirrup – M12 Bolt Hole Base – Ø13.5mm Hole

QLD only

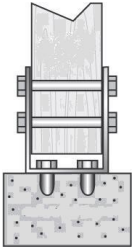
Product Code	Post Size	Shaft Height	Finish Type	Std Carton Qty	Barcode Number
SM75X75X4	75mm	75mm	Hot Dip Galv	10	9314691800216
SM90X75X4	90mm	75mm	Hot Dip Galv	10	9314691800223
SM100X75X4	100mm	75mm	Hot Dip Galv	10	9314691800230

Notes:

- Ideal for pergola, carport and verandah posts
- Used for bolting to existing timber decking or concrete base
- Unique termite resistant design
- Made from 4mm steel
- Hot dip galvanised



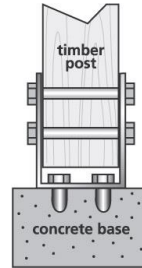
'U' cup bolt-on-tradesman – M12 Bolt Hole



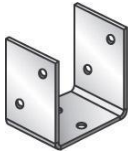
Product Code	Post Size	Side Height	Finish Type	Std Carton Qty	Barcode Number
BOT75X5	75mm	165mm	Hot Dip Galv	10	9314691800155
BOT90X5	90mm	157mm	Hot Dip Galv	10	9314691800162
BOT100X5	100mm	152mm	Hot Dip Galv	10	9314691800179

Notes:

- Ideal for pergola, carport and verandah posts
- Used for bolting to existing timber decking or concrete base
- Designed for deep timber fit
- Made from 5mm steel
- Hot dip galvanised



'U' cup bolt-on-concrete – M12 Bolt Hole except BOC140X8 – M16 Bolt Hole



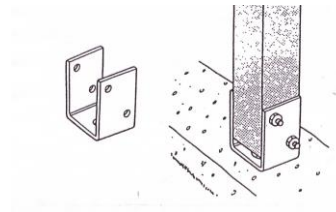
Product Code	Post Size	Side Height	Finish Type	Std Carton Qty	Barcode Number
BOC75X4	75mm	115mm	Hot Dip Galv	10	9314691800186
BOC90X4	90mm	110mm	Hot Dip Galv	10	9314691800193
BOC100X4	100mm	105mm	Hot Dip Galv	10	9314691800209
BOC115X4	115mm	105mm	Hot Dip Galv	10	9314691807987
BOC125X4	125mm	105mm	Hot Dip Galv	10	9314691807994

HEAVY DUTY

BOC140X8	140mm	180mm	Hot Dip Galv	6	9314691806577
----------	-------	-------	--------------	---	---------------

Notes:

- Ideal for pergola, carport and verandah posts
- Used for bolting to existing timber decking or concrete base
- Made from 4mm (or 8mm - BOC140X8) steel
- Hot dip galvanised



'T' blade stirrup – M12 Bolt Hole Base – Ø13.5mm Hole



F11758/F11286

Product Code	Post Size	Shaft Height	Blade H x W	Finish Type	Std Carton Qty	Barcode Number
F11758	Up to 100mm	165mm	100mm x 75mm	Hot Dip Galv	20	9314691117581
F11286	Up to 100mm	300mm	100mm x 75mm	Hot Dip Galv	20	9314691112869

QLD only

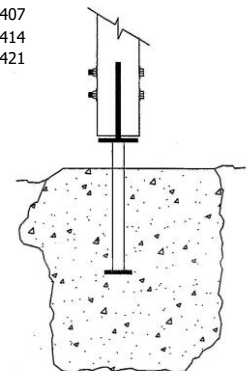
TB90X200	90mm	200mm	150mm x 90mm	Hot Dip Galv	10	9314691800391
TB90X300	90mm	300mm	150mm x 90mm	Hot Dip Galv	10	9314691800407
TB90X450	90mm	450mm	150mm x 90mm	Hot Dip Galv	10	9314691800414
TB90X600	90mm	600mm	150mm x 90mm	Hot Dip Galv	10	9314691800421

Notes:

- Ideal for pergola, carport and verandah posts
- Primarily used for bolting to existing timber decking or concrete base
- Can also be used for setting into concrete
- Suitable for round timber posts up to 100mm diameter
- Termite resistant
- Made from 4mm steel + heavy duty extra weight bearing shaft (OD - Ø25mm)
- TB90 series (see table above) suitable for Queensland climate conditions
- Hot dip galvanised



TB Series



'T' blade stirrup, heavy duty – Blade – M16 Bolt Hole Base – Ø14mm Hole



Product Code	Post Size	Shaft Height	Shaft Ø	Blade H x W	Finish Type	Std Bundle Qty	Barcode Number
TB150X600	Up to 150mm	580mm	46mm	250mm x 130mm	Hot Dip Galv	1	9314691804931
TB200X600	Up to 200mm	580mm	67mm	300mm x 180mm	Hot Dip Galv	1	9314691804948

Notes:

- Ideal for pergola, carport and verandah posts
- Primarily used for bolting to existing timber decking or concrete base
- Can also be used for setting into concrete
- Base made from 5mm steel.
- Heavy duty extra weight bearing shaft
- Base blade and blade - 10mm steel
- Hot dip galvanised

'T' blade stirrup, heavy duty, adjustable



Product Code	Post Size	Shaft Height	Shaft Ø	Blade H x W x T	Finish Type	Std Bundle Qty	Barcode Number
TB150ADJ	Up to 150mm	270 - 470mm	Ø48mm	250 x 130mm x 10mm	Hot Dip Galv	1	9314691808342
TB115ADJ	Up to 115mm	220 - 360mm	Ø48mm	250 x 110mm x 10mm	Hot Dip Galv	1	9314691808540
TB90ADJ	Up to 90mm	220 - 360mm	Ø42mm	150 x 90mm x 5mm	Hot Dip Galv	1	9314691808533

Notes:

- Ideal for pergola, carport and verandah posts
- Primarily used for bolting to existing timber decking or concrete base
- Suits 150mm timber post for TB150ADJ / 115mm timber post for TB115ADJ / 90 mm timber post for TB90ADJ
- Used to adjust height of T-Blade to suit variation in flooring level (and post length) – M24 screw for TB150ADJ & TB115ADJ / M20 screw for TB90ADJ.
- Blade (and base) – 10mm thick for TB150ADJ & TB115ADJ / 5mm thick for TB90ADJ

Bolt-on 'T' blade, heavy duty



BOTB150X10

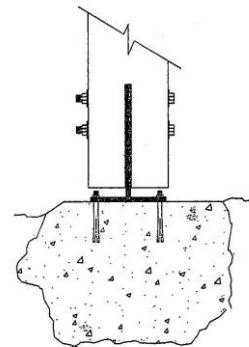
Product Code	Base Size	Blade Height	Finish Type	Std Bundle Qty	Barcode Number
BOTB90X8	90X180mm	250mm	Hot Dip Galv	1	9314691804894
BOTB115/125X8	110X160mm	250mm	Hot Dip Galv	1	9314691804900
BOTB150X10	130X225mm	250mm	Hot Dip Galv	1	9314691804917
BOTB200X10	180X200mm	300mm	Hot Dip Galv	1	9314691804924

Notes:

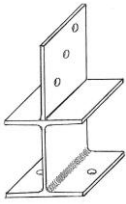
- Ideal for pergola, carport and verandah posts
- Used for bolting to existing timber decking or concrete base
- Made from 8 or 10mm steel
- Hot dip galvanised

Note:

BOTB90X8 has 4ea M12 holes – 2ea in the base plate and 2ea in the blade.
 BOTB115X8 has 4ea M16 holes – 2ea in the base plate and 2ea in the blade.
 BOTB150X10 has 6ea M16holes – 2ea in the base plate and 4ea in the blade.
 BOTB200X10 has 8ea M16 holes – 4ea in the base plate and 4ea in the blade.



T-blade extra heavy duty surface mount



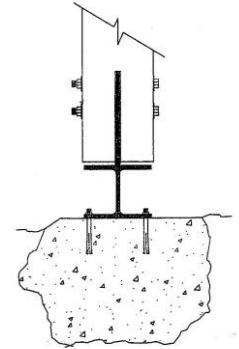
Product Code	Post Size	Blade H x W x T	Finish Type	Std Bundle Qty	Barcode Number
TBXSM150	150mm	150mm x 150mm x 10mm	Hot Dip Galv	1	9314691804986
TBXSM200	200mm	200mm x 200mm x 10mm	Hot Dip Galv	1	9314691804993

Notes:

- Ideal for pergola, carport and verandah posts of 150mm or 200mm
- Primarily used for bolting to existing timber decking or concrete base
- Hot dip galvanised

Note:

TBXSM150 has 4ea holes – 2ea M16 holes in the base plate and 2ea M12 holes in the blade.
 TBXSM200 has 5ea holes – 2ea M16 holes in the base plate and 3ea M12 holes in the blade.



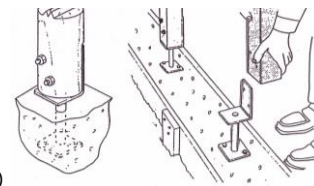
Angle type stirrup – M12 Bolt Hole Base – Ø13.5mm Hole



Product Code	Post Size	Shaft Height	Finish Type	Std Carton Qty	Barcode Number
LPS90X75	90mm	75mm	Hot Dip Galv	10	9314691807871
LPS90X130	90mm	130mm	Hot Dip Galv	10	9314691807888
LPS90X200	90mm	200mm	Hot Dip Galv	10	9314691800438
LPS90X300	90mm	300mm	Hot Dip Galv	10	9314691800445
LPS90X450	90mm	450mm	Hot Dip Galv	10	9314691800452
LPS90X600	90mm	600mm	Hot Dip Galv	10	9314691800469

Notes:

- Ideal for pergola, carport and verandah posts
- Primarily used for bolting to existing timber decking or concrete base
- Can also be used for setting into concrete
- Ideal for posts where access is limited to only one side of post e.g., post located against a wall
- Ideal for use with round permapipe posts
- Unique termite resistant design
- Made from 75mm x 4mm steel + heavy duty extra weight bearing shaft – (OD - Ø25mm)
- Angle – 112mm height / 95mm horizontal length
- Hot dip galvanised



L-stirrup post support rod stem – M12 Bolt Hole Base – Ø13.5mm Hole



Product Code	Post Size	Shaft Height	Blade H x W	Finish Type	Std Carton Qty	Barcode Number
LSPS50300	50mm	300mm	140mm x 40mm	Hot Dip Galv	6	9314691805051
LSPS50450	50mm	450mm	140mm x 40mm	Hot Dip Galv	6	9314691805068
LSPS50300X90	50mm	300mm	90mm x 40mm	Hot Dip Galv	6	9314691807857
LSPS50450X90	50mm	450mm	90mm x 40mm	Hot Dip Galv	6	9314691807864

Notes:

- Ideal for sleepers, fence posts and decks
- Primarily used for bolting to existing timber decking or concrete base
- L stirrup section – 50 x 6mm flat steel plate
- Solid stem post (Ø20mm)
- Hot dip galvanised

Tornado stirrup – M12 Bolt Hole



Material Thickness – 6mm steel

Product Code	Post Size	Stirrup Length	Finish Type	Std Bundle Qty	Barcode Number
T75X300	75mm	300mm	Hot Dip Galv	6	9314691800001
T75X400	75mm	400mm	Hot Dip Galv	6	9314691800032
T75X450	75mm	450mm	Hot Dip Galv	6	9314691800063
T75X600	75mm	600mm	Hot Dip Galv	6	9314691800094
T90X300	90mm	300mm	Hot Dip Galv	6	9314691800018
T90X400	90mm	400mm	Hot Dip Galv	6	9314691800049
T90X450	90mm	450mm	Hot Dip Galv	6	9314691800070
T90X600	90mm	600mm	Hot Dip Galv	6	9314691800100
T100X300	100mm	300mm	Hot Dip Galv	6	9314691800025
T100X400	100mm	400mm	Hot Dip Galv	6	9314691800056
T100X450	100mm	450mm	Hot Dip Galv	6	9314691800087
T100X600	100mm	600mm	Hot Dip Galv	6	9314691800117
T115X600	115mm	600mm	Hot Dip Galv	6	9314691800124
T125X600	125mm	600mm	Hot Dip Galv	6	9314691800131
T140X600	140mm	600mm	Hot Dip Galv	6	9314691805150
T150X600	150mm	600mm	Hot Dip Galv	6	9314691800148

Tornado stirrup – M12 Bolt Hole

Material Thickness – 5mm steel

Product Code	Post Size	Stirrup Length	Finish Type	Std Bundle Qty	Barcode Number
T90X300X5	90mm	300mm	Hot Dip Galv	6	9314691807758
T90X450X5	90mm	450mm	Hot Dip Galv	6	9314691805884
T90X600X5	90mm	600mm	Hot Dip Galv	6	9314691805600
T100X300X5	100mm	300mm	Hot Dip Galv	6	9314691807765
T115X600X5	115mm	600mm	Hot Dip Galv	6	9314691805617
T125X600X5	125mm	600mm	Hot Dip Galv	6	9314691807772

Notes for all Tornado stirrup types:

- Ideal post support for extreme wind conditions
- Designed for tornado type conditions
- Ideal for pergola, carport and verandah posts
- Made from 50mm x 5mm or 6mm steel
- Hot dip galvanised
- M12 bolt hole size

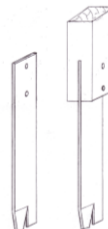
Fish-tail stirrup – M12 Bolt Hole



Product Code	Post Size	Length	Finish Type	Std Carton Qty	Barcode Number
FT50X6X400	50mmx6mm	400mm	Hot Dip Galv	10	9314691800919
FT50X6X600	50mmx6mm	600mm	Hot Dip Galv	10	9314691800926
FT65X8X600	65mmx8mm	600mm	Hot Dip Galv	10	9314691800933
FT65X8X800	65mmx8mm	800mm	Hot Dip Galv	5	9314691800940
FT75X10X600	75mmx10mm	600mm	Hot Dip Galv	5	9314691800957

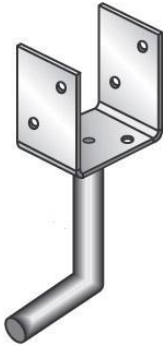
Notes:

- Used for setting into concrete
- Ideal post support for wide timber posts
- Ideal for privacy fences and pergola, carport and verandah posts
- Made from 6, 8 or 10mm steel
- Hot dip galvanised
- M12 bolt hole size



'U' cup stake – M12 Bolt Hole

NSW only



Product Code	Post Size	Shaft Length	Finish Type	Std Carton Qty	Barcode Number
F11300	75mm	150mm	Hot Dip Galv	10	9314691113002
F11301	90mm	150mm	Hot Dip Galv	10	9314691113019
F11302	90mm	200mm	Hot Dip Galv	10	9314691113026
F11303	90mm	300mm	Hot Dip Galv	10	9314691113033
F11304	100mm	150mm	Hot Dip Galv	10	9314691113040
F11305	100mm	300mm	Hot Dip Galv	10	9314691113057
F11306	115mm	150mm	Hot Dip Galv	10	9314691113064
F11307	115mm	300mm	Hot Dip Galv	10	9314691113071
F11308	125mm	150mm	Hot Dip Galv	10	9314691113088
F11309	150mm	150mm	Hot Dip Galv	10	9314691113095

Notes:

- Ideal for pergola, carport and verandah posts
- Used for setting into concrete
- Easy "push in" type post support
- Smooth hot dip galvanized coating finish
- Elevated position to prevent wood rot and termite damage
- Made from 75mm x 4mm steel plus solid bar shaft
- Height of U-Cup – 105mm
- M12 bolt hole

Centre fix stirrup stake – M12 Bolt Hole

NSW only



Product Code	Post Size	Shaft Height	Shaft Dia.	Std Carton Qty	Barcode Number
F11740	Up to 100mm	130mm	25mm	10	9314691117406

Notes:

- Ideal for pergola, carport and verandah posts – either square or round posts
- Ideal for posts where post support is not to be visible
- Used for setting into concrete
- Easy "push in" type post support
- Made from 4mm steel
- Top vertical section 65mm in length above top plate
- Solid bar construction
- Hot dip galvanised

Angle stirrup stake – M12 Bolt Hole

NSW only



Product Code	Post Size	Shaft Length	Finish Type	Std Carton Qty	Barcode Number
F11310	Up to 100mm	150mm	Hot Dip Galv	10	9314691113101
F11311	Up to 100mm	200mm	Hot Dip Galv	10	9314691113118
F11312	Up to 100mm	300mm	Hot Dip Galv	10	9314691113125

Notes:

- Ideal for pergola, carport and verandah posts
- Ideal for posts where access is limited to only one side of post, e.g., post located against a wall
- Ideal for use with round permapine posts
- Used for setting into concrete
- Easy 'push in' type post support
- Smooth hot dip galvanized coating finish
- Elevated position to prevent wood rot and termite damage
- Made from 75mm x 4mm steel plus solid bar shaft
- Angle – 96mm height / 90mm horizontal length
- M12 bolt hole

Centre fix type stirrup



CENTRE FIX TYPE STIRRUP – M12 Bolt Hole

Product Code	Post Size	Shaft Height	Shaft Dia.	Std Carton Qty	Barcode Number
F11752	Up to 100mm	75mm	25mm	10	9314691117529
F11763	Up to 100mm	130mm	24mm	10	9314691117635
F11754	Up to 100mm	200mm	25mm	10	9314691117543
F11765	Up to 100mm	300mm	24mm	10	9314691117659

CENTRE FIX TYPE STIRRUP – M10 Bolt Hole

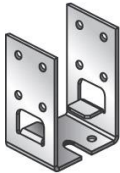
F11766	Up to 100mm	250mm	25mm	10	9314691117666
F11767	Up to 100mm	375mm	25mm	10	9314691117673

Note: Shaft Height (in the above table) is the distance between the two square plates.

Notes:

- Ideal for pergola, carport and verandah posts – either square or round posts
- Ideal for posts where post support is not to be visible
- Primarily used for bolting to existing timber decking or concrete base
- Can also be used for setting into concrete (except F11752 & F11763)
- Made from 4mm steel + heavy duty extra weight bearing shaft
- Solid bar construction
- Top vertical section 62mm in length above top plate
- Hot dip galvanised

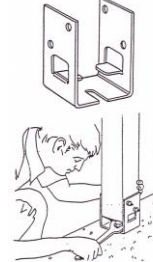
Saddle type with mount – M12 Bolt Hole



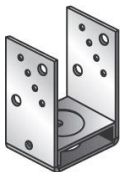
Product Code	Post Size	Mount Height	Finish Type	Std Carton Qty	Barcode Number
F11290	90mm	30mm	Hot Dip Galv	20	9314691112906
F11291	100mm	30mm	Hot Dip Galv	20	9314691112913
F11292	115mm	30mm	Hot Dip Galv	20	9314691700547
F11293	125mm	30mm	Hot Dip Galv	20	9314691700554

Notes:

- Ideal for pergola, carport and verandah posts
- Primarily used for bolting to existing timber decking or concrete base
- Unique foot mount to elevate post from ground level
- Made from 4mm steel
- M12 bolt hole size
- Timber insert 106mm from saddle top to mount lug.



Thin style saddle with mount – M12 Bolt Hole

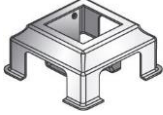


Product Code	Post Size	Mount Height	Finish Type	Std Carton Qty	Barcode Number
F11294	90mm	30mm	Hot Dip Galv	20	9314691801862
F11295	100mm	30mm	Hot Dip Galv	20	9314691801879

Notes:

- Bolt down post support - Ideal for pergola, carport and verandah posts
- Primarily used for bolting to existing timber decking or concrete base
- Galvanised "Galvabond style" steel plate stirrup 2mm with 3mm base (top section)

Colonial bolt-down – M12 Bolt hole

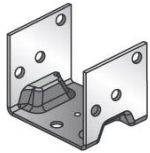


Product Code	Post Size	Finish Colour	Std Carton Qty	Barcode Number
F11400	90mm	Galvanised	6	9314691114009
F11401	100mm	Galvanised	6	9314691114016

Notes:

- Create an elegant distinctive style on pergolas, carports and verandahs
- Made from 2.5mm pressed steel
- Height 85mm
- Hot dip galvanised

Colonial saddle bracket base only – M12 Bolt hole

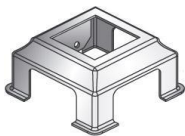


Product Code	Post Size	Finish Type	Std Carton Qty	Barcode Number
F11469	90mm	Hot Dip Galv	10	9314691114696
F11470	100mm	Hot Dip Galv	10	9314691114719
F11472	115mm	Hot Dip Galv	10	9314691114726

Notes:

- Combines with colonial slider to make inner part of 'two piece split style'
- Made from 3mm pressed steel
- Hot dip galvanised
- Suits 90mm, 100mm and 115mm timber posts

Colonial surround slider base only

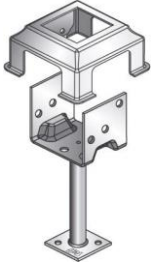


Product Code	Post Size	Finish Type	Std Carton Qty	Barcode Number
F11458	90mm	Hot Dip Galv	6	9314691114580
F11459	100mm	Hot Dip Galv	6	9314691114597
F11460	115mm	Hot Dip Galv	6	9314691114603

Notes:

- Create an elegant distinctive style on pergolas, carports and verandahs
- Combines with colonial saddle bracket to make 'two piece split style'
- Unique design which allows colonial to be lowered down post when concreting or paving is completed
- Made from 2.5mm pressed steel
- Height 85mm
- Hot dip galvanised
- Suits 90mm, 100mm and 115mm timber posts

Colonial two piece split – M12 Bolt hole

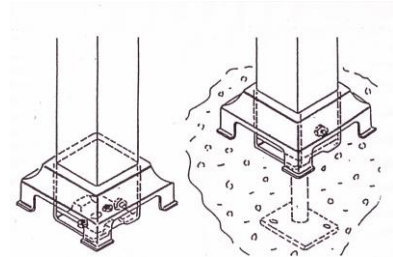


Product Code	Post Size	Shaft Length	Shaft Dia.	Finish Type	Std Carton Qty	Barcode Number
F11461	90mm	No Shaft	-	Hot Dip Galv	6	9314691114610
F11441	90mm	130mm	25mm	Hot Dip Galv	6	9314691114412
F11443	90mm	200mm	25mm	Hot Dip Galv	6	9314691114436
F11471	90mm	300mm	25mm	Hot Dip Galv	6	9314691114702
F11473	115mm	300mm	25mm	Hot Dip Galv	6	9314691701636

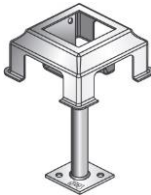
Notes:

- Create an elegant distinctive style on pergolas, carports and verandahs
- Suits post sizes 90mm, 100mm and up to 125mm trimmed post
- Ideal replacement for general post support
- Made from 2.5mm pressed steel
- Termite resistant
- Hot dip galvanised

Please Note: The slider must be nailed to the post before sliding it down after concreting



Colonial wet foot – M12 Bolt hole

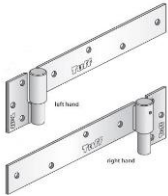


Product Code	Post Size	Shaft Length	Shaft Dia.	Finish Type	Std Carton Qty	Barcode Number
F11411	90mm	100mm	25mm	Hot Dip Galv	6	9314691114115
F11410	90mm	130mm	25mm	Hot Dip Galv	6	9314691114108
F11412	90mm	200mm	25mm	Hot Dip Galv	6	9314691114122
F11435	90mm	300mm	25mm	Hot Dip Galv	6	9314691114351
F11413	100mm	130mm	25mm	Hot Dip Galv	6	9314691114139

Notes:

- Create an elegant distinctive style on pergolas, carports and verandahs
- Suits post sizes 90mm, 100mm and up to 125mm trimmed post
- Made from 2.5mm pressed steel
- Hot dip galvanised

Ball bearing hinge – tu1



Product Code	Description	Finish Type	Std Carton Qty	Barcode Number
Pre Pack				
F11100	Std Gate Hinge LH	Zinc plated	5 sets of 2 (10)	9314691111008
F11101	Std Gate Hinge RH	Zinc plated	5 sets of 2 (10)	9314691111015
Bulk Pack				
F11102	Std Gate Hinge LH	Zinc plated	10 sets of 2 (20)	9314691111022
F11103	Std Gate Hinge RH	Zinc plated	10 sets of 2 (20)	9314691111039

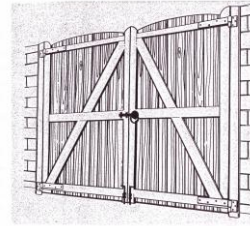
Application

- Suitable for timber gates up to 1800mm wide
- Suitable for timber-to-steel or steel-to-steel gate design

Note: The TUFF ball bearing hinge range are specifically designed for vertical application.

Advantages

- Maximum load of 500kg per pair (subject to method of fixing)
- Hinge independently (failure) tested and recorded at 2889 Newtons (maximum load)
- Bracket plate – 4mm thick
- Extra tough double welded construction, featuring 25mm dia. bush and 19mm dia. Pin
- Long bracket length – 275mm (from centre line of hinge pin)
- Fixed bracket length – 53mm (from centre line of hinge pin)
- Easy action – ball bearing pivot enables effortless gate movement
- Available in both left hand and right hand designs. To select LH or RH hinge, view from inside of fence area. Gates open to you.
- Sand blasted prior to zinc plating
- Smooth zinc plated coating finish, to provide long term corrosion protection
- Complete with 14 each 8mm x 38mm zinc plated coach screws (included in pre pack but not in bulk pack)



Ball bearing hinge – tu1s



Product Code	Description	Finish Type	Std Carton Qty	Barcode Number
Pre Pack				
F11108	Short Gate Hinge LH	Zinc plated	5 sets of 2 (10)	9314691111084
F11109	Short Gate Hinge RH	Zinc plated	5 sets of 2 (10)	9314691111091

Application

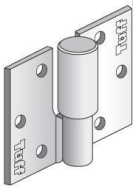
- Suitable for timber gates up to 1500mm wide
- Suitable for timber-to-steel or steel-to-steel gate design

Note: The TUFF ball bearing hinge range are specifically designed for vertical application.

Advantages

- Maximum load of 500kg per pair (subject to method of fixing)
- Hinge independently (failure) tested and recorded at 2889 Newtons (maximum load)
- Bracket plate – 4mm thick
- Extra tough double welded construction, featuring 25mm dia. bush and 19mm dia. Pin
- Long bracket length – 155mm (from centre line of hinge pin)
- Fixed bracket length – 53mm (from centre line of hinge pin)
- Easy action – ball bearing pivot enables effortless gate movement
- Available in both left hand and right hand designs. To select LH or RH hinge, view from inside of fence area. Gates open towards you.
- Sand blasted prior to zinc plating
- Smooth zinc plated coating finish, to provide long term corrosion protection
- Complete with 10 each 8mm x 38mm zinc plated coach screws (included in pre pack)

Ball bearing hinge – tu1b



Product Code	Description	Finish Type	Std Carton Qty	Barcode Number
Pre Pack				
F11110	Butt Gate Hinge LH	Zinc plated	5 sets of 2 (10)	9314691111107
F11111	Butt Gate Hinge RH	Zinc plated	5 sets of 2 (10)	9314691111114
Bulk Pack				
F11112	Butt Gate Hinge LH	Zinc plated	20 sets of 2 (40)	9314691111121
F11113	Butt Gate Hinge RH	Zinc plated	20 sets of 2 (40)	9314691111138

Application

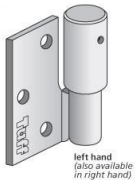
- Suitable for timber gates up to 900mm wide
- Versatile hinge suitable for gates, doors, external shutters, etc.
- Suitable for timber to timber, timber to steel and steel to steel applications.

Note: The TUFF ball bearing hinge range are specifically designed for vertical application.

Advantages

- Maximum load of 500kg per pair (subject to method of fixing)
- Hinge independently (failure) tested and recorded at 2889 Newtons (maximum load)
- Bracket plate – 4mm thick
- Extra tough double welded construction, featuring 25mm dia. bush and 19mm dia. pin
- Easy action – ball bearing pivot enables effortless gate movement
- Available in both left hand and right hand designs. To select LH or RH hinge, view from inside of fence area. Gates open to you.
- Sand blasted prior to zinc plating
- Smooth zinc plated coating finish, to provide long term corrosion protection
- Complete with 12 each 8mm x 38mm zinc plated coach screws (included in pre pack but not in bulk pack)

Ball bearing hinge – tu2



Product Code	Description	Finish Type	Std Carton Qty	Barcode Number
Bulk Pack				
F11226	Hinge LH	Zinc plated	10 sets of 2 (20)	9314691111268
F11227	Hinge RH	Zinc plated	10 sets of 2 (20)	9314691111275

Application

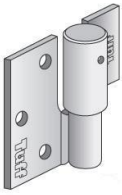
- Suitable for timber-to-steel or steel-to-steel gate design

Note: The TUFF ball bearing hinge range are specifically designed for vertical application.

Advantages

- Maximum load of 500kg per pair (subject to method of fixing)
- Hinge independently (failure) tested and recorded at 2898 Newtons (maximum load)
- Bracket plate – 4mm thick
- Extra tough double welded construction, featuring 25mm dia. bush and 19mm dia. pin
- Easy action – ball bearing pivot enables effortless gate movement
- Available in both left hand and right hand designs. To select LH or RH hinge, view from inside of fence area. Gates open towards you.
- Sand blasted prior to zinc plating
- Smooth zinc plated coating finish, to provide long term corrosion protection
- Bulk pack only (screws not included in bulk pack)

Ball bearing hinge – tu2a



Product Code	Description	Finish Type	Std Carton Qty	Barcode Number
Pre Pack				
F11114	Hinge LH	Zinc plated	5 sets of 2 (10)	9314691111145
F11115	Hinge RH	Zinc plated	5 sets of 2 (10)	9314691111152
Bulk Pack				
F11228	Hinge LH	Zinc plated	20 sets of 2 (40)	9314691112289
F11229	Hinge RH	Zinc plated	20 sets of 2 (40)	9314691112296

Application

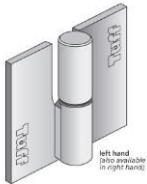
- Versatile hinge suitable for small gate, doors, external shutters, etc
- Suitable for timber-to-steel or steel-to-steel applications

Note: The TUFF ball bearing hinge range are specifically designed for vertical application.

Advantages

- Maximum load of 500kg per pair (subject to method of fixing)
- Bush plate for easy welding to flat steel surfaces
- Hinge independently (failure) tested and recorded at 2898 Newtons (maximum load)
- Bracket plate – 4mm thick (bolt), 5mm thick (weld)
- Extra tough double welded construction, featuring 25mm dia. bush and 19mm dia. pin
- Easy action – ball bearing pivot enables effortless gate movement
- Available in both left hand and right hand designs. To select LH or RH hinge, view from inside of fence area. Gates open towards you.
- Sand blasted prior to zinc plating
- Smooth zinc plated coating finish, to provide long term corrosion protection
- Complete with 6 each 8mm x 38mm zinc plated coach screws (included in pre pack but not in bulk pack)

Ball bearing hinge – tu3



Product Code	Description	Finish Type	Std Carton Qty	Barcode Number
Bulk Pack				
F11116	H/Duty Hinge LH	Zinc plated	5 sets of 2 (10)	9314691111169
F11117	H/Duty Hinge RH	Zinc plated	5 sets of 2 (10)	9361691111176

Application

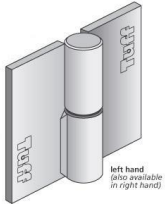
- Suitable for steel-to-steel gate design

Note: The TUFF ball bearing hinge range are specifically designed for vertical application.

Advantages

- Maximum load of 1000kg per pair (subject to method of fixing)
- Hinge independently (failure) tested and recorded at 5051 Newtons (maximum load)
- Bracket plate – 5mm thick
- Extra tough double welded construction, featuring 25mm dia. bush and 19mm dia. pin
- Easy action – ball bearing pivot enables effortless gate movement
- Available in both left hand and right hand designs. To select LH or RH hinge, view from inside of fence area. Gates open towards you.
- Sand blasted prior to zinc plating
- Smooth zinc plated coating finish, to provide long term corrosion protection
- Heavy duty design

Ball bearing hinge – tu3p



Product Code	Description	Finish Type	Std Carton Qty	Barcode Number
Bulk Pack				
F11118	H/Duty Butt Hinge LH	Zinc plated	5 sets of 2 (10)	9314691111183
F11119	H/Duty Butt Hinge RH	Zinc plated	5 sets of 2 (10)	9314691111190

Application

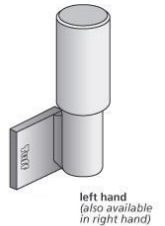
- Suitable for steel-to-steel gate design

Note: The TUFF ball bearing hinge range are specifically designed for vertical application.

Advantages

- Maximum load of 1000kg per pair (subject to method of fixing)
- Heavy duty designed hinges with no gaps when closed for maximum security
- Hinge independently (failure) tested and recorded at 5051 Newtons (maximum load)
- Bracket plate – 5mm thick
- Extra tough double welded construction, featuring 25mm dia. bush and 19mm dia. pin
- Easy action – ball bearing pivot enables effortless gate movement
- Available in both left hand and right hand designs. To select LH or RH hinge, view from inside of fence area. Gates open towards you.
- Sand blasted prior to zinc plating
- Smooth zinc plated coating finish, to provide long term corrosion protection

Ball bearing hinge – tu5



Product Code	Description	Finish Type	Std Carton Qty	Barcode Number
Pre Pack				
F11128	Hinge LH	Zinc plated	5 sets of 2 (10)	9314691111282
F11129	Hinge RH	Zinc plated	5 sets of 2 (10)	9314691111299

Application

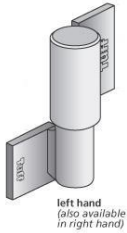
- Suitable for steel-to-steel doors and gates

Note: The TUFF ball bearing hinge range are specifically designed for vertical application.

Advantages

- Maximum load of 500kg per pair (subject to method of fixing)
- Hinge independently (failure) tested and recorded at 2898 Newtons (maximum load)
- Bracket plate – 5mm thick
- Extra tough double welded construction, featuring 25mm dia. bush and 19mm dia. Pin
- Easy action – ball bearing pivot enables effortless gate movement
- Available in both left hand and right hand designs. To select LH or RH hinge, view from inside of fence area. Gates open towards you.
- Small pin plate enables welding to flat surface
- Sand blasted prior to zinc plating
- Smooth zinc plated coating finish, to provide long term corrosion protection

Ball bearing hinge – tu5a



Product Code	Description	Finish Type	Std Carton Qty	Barcode Number
Pre Pack				
F11122	Steel to Steel Hinge LH	Zinc plated	5 sets of 2 (10)	9314691111220
F11123	Steel to Steel Hinge RH	Zinc plated	5 sets of 2 (10)	9314691111237

Application

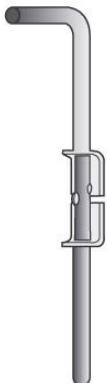
- Suitable for steel-to-steel doors and gates

Note: The TUFF ball bearing hinge range are specifically designed for vertical application.

Advantages

- Maximum load of 500kg per pair (subject to method of fixing)
- Hinge independently (failure) tested and recorded at 2898 Newtons (maximum load)
- Bracket plate – 5mm thick
- Extra tough double welded construction, featuring 25mm dia. bush and 19mm dia. pin
- Easy action – ball bearing pivot enables effortless gate movement
- Available in both left hand and right hand designs. To select LH or RH hinge, view from inside of fence area. Gates open towards you.
- Flutes on both bush and pin enables welding to flat steel surfaces
- Sand blasted prior to zinc plating
- Smooth zinc plated coating finish, to provide long term corrosion protection

Gate bolt

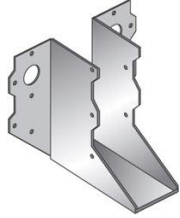


Product Code	Description	Finish Type	Std Carton Qty	Barcode Number
Pre Pack				
12mm				
M10919	305mm Bolt only	Zinc plated	25	9314691109197
M10916	440mm Bolt only	Zinc plated	25	9314691109166
M10918	12mm Fixing Bracket	Zinc plated	50 units	9314691109180
16mm				
M10914	440mm Bolt Only	Zinc plated	25	9314691109142
M10908	600mm Bolt Only	Zinc plated	25	9314691109081
M10910	16mm Fixing Bracket	Zinc plated	50 units	9314691109104

Notes:

- Used universally on all gates (or doors)
- Two different lengths in two diameters – 12mm and 16mm
- Gates and fixing brackets are sold separately.

Joist support - Z275 Galvabond



Product Code	Description	Finish Type	Std Carton Qty	Barcode Number
35MM Joist Supports				
JS9035	Joist Support 90x35mm	Z275	45	9314691805310
JS12035	Joist Support 120x35mm	Z275	45	9314691805334
JS14035	Joist Support 140x35mm	Z275	40	9314691805358
JS18035	Joist Support 180x35mm	Z275	30	9314691806324
38MM Joist Supports				
JS9038	Joist Support 90x38mm	Z275	45	9314691806331
JS12038	Joist Support 120x38mm	Z275	45	9314691806348
JS14038	Joist Support 140x38mm	Z275	40	9314691806355
JS18038	Joist Support 180x38mm	Z275	30	9314691806362
45MM Joist Supports				
JS9045	Joist Support 90x45mm	Z275	45	9314691805327
JS12045	Joist Support 120x45mm	Z275	45	9314691805341
JS14045	Joist Support 140x45mm	Z275	40	9314691805365
JS18045	Joist Support 180x45mm	Z275	30	9314691806379
JS22045	Joist Support 220x45mm	Z275	25	9314691806676
50MM Joist Supports				
JS9050	Joist Support 90x50mm	Z275	45	9314691806430
JS12050	Joist Support 120x50mm	Z275	45	9314691806447
JS14050	Joist Support 140x50mm	Z275	40	9314691805570
JS18050	Joist Support 180x50mm	Z275	30	9314691806454

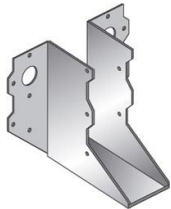
Application

The TUFF Joist supports are used for timber beam to beam joints.

Advantages

- The wide range (and sizes) of these brackets provides for all common sized timbers and for laminated timber beams.
- The joist supports are strong, well designed, cost effective and easy to install.
- Made from 1mm G300 Z275 galvanised ("Galvabond style") steel.
- Nailed to both the supporting beam and the supported beam with the joist support having wide flanges for ease of nailing.

Joist support – G316 S/S



Product Code	Description	Finish Type	Std Carton Qty	Barcode Number
35MM Joist Supports				
JS9035SS	Joist Support 90x35mm SS	Grade 316 S/S	20	9314691808366
JS12035SS	Joist Support 120x35mm SS	Grade 316 S/S	20	9314691808373
45MM Joist Supports				
JS9045SS	Joist Support 90x45mm SS	Grade 316 S/S	20	9314691808441
JS12045SS	Joist Support 120x45mm SS	Grade 316 S/S	20	9314691808458
JS14045SS	Joist Support 140x45mm SS	Grade 316 S/S	20	9314691808465
JS18045SS	Joist Support 180x45mm SS	Grade 316 S/S	20	9314691808472
50MM Joist Supports				
JS9050SS	Joist Support 90x50mm SS	Grade 316 S/S	20	9314691808496
JS12050SS	Joist Support 120x50mm SS	Grade 316 S/S	20	9314691808502
JS14050SS	Joist Support 140x50mm SS	Grade 316 S/S	20	9314691808519
JS18050SS	Joist Support 180x50mm SS	Grade 316 S/S	20	9314691808526

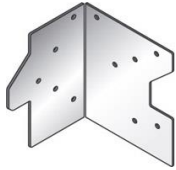
Application

The TUFF Joist supports are used for joist to beam joints, ceiling joist to hanger, floor truss to beam, beams to masonry, pergola rafters to fascia.

Advantages

- The wide range (and sizes) of these brackets provides for all common sized timbers and for laminated timber beams.
- The joist supports are strong, well designed, cost effective and easy to install.
- Made from 1mm G316 stainless steel
- Nailed to both the supporting beam and the supported beam with the joist support having wide flanges for ease of nailing.

Mini grip



Product Code	Description	Finish Type	Std Carton Qty	Barcode Number
MG57	Mini Grip 57mm	Z275 Galvabond	100	9314691802395

Application

The TUFF Mini Grip is an economical connector for numerous lightly loaded joints in houses and other buildings.

Note

- Made from 1mm G300 Z275 galvanised ("Galvabond style") steel x 57mm long (x 36mm x 36mm)

Multi grip – Z275 Galvabond & G316 S/S



Product Code	Description	Finish Type	Std Carton Qty	Barcode Number
MG100	Multi Grip 100mm	Z275 Galvabond	100	9314691802401
MG100-SS	Multi Grip 100mm - SS	Grade 316 S/S	50	9314691806478

Application

The TUFF Multi Grip has multiple uses in timber framing, these connectors are suitable for high load applications, e.g. fixing joists to the face of bearers or as tie-down connector for trusses or rafters.

Note

- Made from either 1mm G300 Z275 galvanised ("Galvabond style") steel or G316 stainless steel x 100mm long (x 36mm x 36mm)

Triple lock – Z275 Galvabond & G316 S/S



Product Code	Description	Finish Type	Std Carton Qty	Barcode Number
TLLH	Triple Lock LH	Z275 Galvabond	100	9314691805372
TLRH	Triple Lock RH	Z275 Galvabond	100	9314691805389
TLLH-SS	Triple Lock LH	Grade 316 S/S	50	9314691806416
TLRH-SS	Triple Lock RH	Grade 316 S/S	50	9314691806423

Application

The TUFF Triple Lock in both left and right hand can be used for many nail fixed timber joints, including roof truss to wall plate, stud to wall plate, rafter or ceiling joist to wall plate, corner studs to wall plate, joist to supporting beam, purlin to truss, hanger to ceiling joist.

Advantages

- Made from either 1mm G300 Z275 galvanised ("Galvabond style") steel or G316 stainless steel x 105mm o/a length.

Uni-tie



Product Code	Description	Finish Type	Std Carton Qty	Barcode Number
UTLH	Unities LH	Z275 Galvabond	100	9314691805396
UTRH	Unities RH	Z275 Galvabond	100	9314691805402

Application

- Uni-ties are used for joining timber at right angles

Advantages

- Made from 1mm G300 Z275 galvanised ("Galvabond style") steel x 170mm o/a length.

Joist strap



Product Code	Description	Finish Type	Std Carton Qty	Barcode Number
JS	Joist Strap – 180mm long	Z275 Galvabond	150	9314691802456

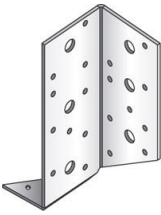
Application

- The TUFF Joist Strap is ideal for connecting timber members at right angles such as rafters to beams, purlins to rafters or trusses, floor joists to bearers

Advantages

- Made from 1mm G300 Z275 Galvabond material x 175mm long

Girder bracket



Product Code	Description	Std Carton Qty	Barcode Number
FBGB150LH	Left 150 x 50 x 50 x 2mm	20	9314691801800
FBGB150RH	Right 150 x 50 x 50 x 2mm	20	9314691801817
FBGB200LH	Left 200 x 50 x 50 x 2mm	20	9314691701230
FBGB200RH	Right 200 x 50 x 50 x 2mm	20	9314691701247

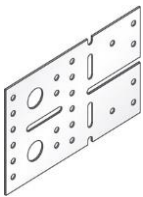
Application

- The TUFF Girder bracket is an ideal connector for many uses in timber framing

Advantages

- Made from 2mm galvanised ("Galvabond style") steel.

Timberlock



Product Code	Description	Std Carton Qty	Barcode Number
FBTL3	110 x 45 x 45 x 1mm (Angle)	100	9314691701254
FBTL4	110 x 90 x 1mm (Flat Plate)	100	9314691701261

Application

- The TUFF Timberlock is an ideal connector for many uses in timber framing.

Advantages

- Made from 1mm galvanised ("Galvabond style") steel.

Connector Plate



Product Code	Description	Finish Type	Std Carton Qty	Barcode Number
CP60100	Connector Plate 60x100mm	Z275	100	9314691807970

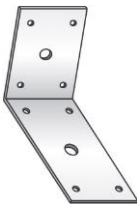
Application

- The TUFF Connector Plate is a quick, simple, economical and easy to use connector for jointing timber wall plates normally jointed by more time consuming conventional methods. The square holes allow for skew nailing when required.

Advantages

- Made from 0.8mm G300-Z275 galvanised steel.

Pergola angle bracket



Product Code	Description	Finish Type	Std Carton Qty	Barcode Number
PA36	Pergola Angle Bracket	Galvabond	100	9314691802555

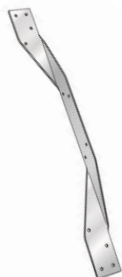
Application

- The TUFF Pergola Angle Bracket is used for pergola timber beam to beam joints

Advantages

- Made from 1.6mm G300 Galvabond material – 90mm x 65mm x 36mm wide
- Can be bolted and / or nailed to the beam(s)

Cyclone strap



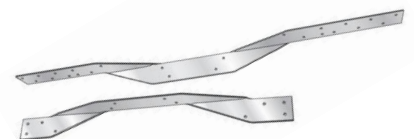
Product Code	Description	Finish Type	Std Carton Qty	Barcode Number
CS400	Cyclone Strap 400X25	Z275 Galvabond	80	9314691806553
CS600	Cyclone Strap 600X25	Z275 Galvabond	80	9314691808560
CS900	Cyclone Strap 900X30	Z275 Galvabond	Bundle of 25	9314691806621

Application

The TUFF Cyclone Strap is ideal for tying down purlins to trusses or roof Trusses or other roof members to the wall frame in cyclonic areas.

Advantages

- Made from 1mm (CS400 / CS900) and 1.2mm (CS600) G300 Z275 Galvabond material



CS400 and CS600

Internal wall bracket



Product Code	Description	Finish Type	Std Carton Qty	Barcode Number
IWB	Internal Wall Bracket	Z275 Galvabond	100	9314691806546

Application

- The TUFF Internal Wall Bracket is used for stabilizing the tops of walls by fixing them laterally to the bottom chord of roof trusses. The TUFF Internal Wall Bracket has slots to permit vertical movement in the truss over time without transferring the load to the wall.

Advantages

- Made from 1mm G300 Z275 Galvabond material – 110mm x 45mm x 40mm wide

Batten tie



Product Code	Description	Finish Type	Std Carton Qty	Barcode Number
BT	Batten Tie	Z275 Galvabond	70	9314691806539

Application

- The TUFF Batten Tie is used for tying down roof battens to trusses or rafters.

Advantages

- Made from 1mm G300 Z275 Galvabond material – 75mm inside w/ 115mm sides
- Easy and quick to install
- Have sharp pointed built-in 'claw' nails for penetration into both softwoods and hardwood

Plate tie



Product Code	Description	Finish Type	Std Carton Qty	Barcode Number
PT400	Plate Tie – 400x25mm	Z275 Galvabond	80	9314691806522

Application

- The TUFF Plate Tie is used for jointing the top and bottom plates to studs.

Advantages

- Made from 1mm G300 Z275 Galvabond material – 245mm x 155mm x 25mm wide
- Easy and quick to install
- Greater tie down strength
- No splitting of timber

Sisalation disk



Product Code	Description	Finish Type	Std Carton Qty	Barcode Number
SD	Sisalation Disk	Z80 Galvabond	5000 in 10 packs of 500	9314691806584

Application

- The TUFF Sisalation Disk is used for securing Sisalation insulation to timber members.
- Securing signage to timber frame / posts

Advantages

- Made from 0.3mm Z80 Galvabond material – OD Ø38mm
- Easy and quick to install

Foil fastener



Product Code	Description	Finish Type	Std Carton Qty	Barcode Number
FFB-R	Foil Fastener - Round	Z275 Galvabond	50 straps of 10=500	9314691806614

Application

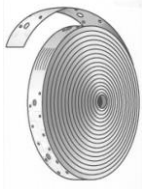
The TUFF Foil fastener is an ideal connector for fixing building insulation foils to timber wall and roof frames. With built-in teeth, the Foil fastener is easy and quick to install thus eliminating the need for nails.

Advantage

- Made from 0.8mm G300-Z275 galvanised steel.
- Designed for
 - easy penetration and excellent holding power in all timbers
 - reduced tendency for the foil to tear in windy conditions.



Builder's punched strap



Product Code	Description	Finish Type	Unit Qty	Barcode Number
0.8 x 25mm				
HI6MX0.8X25Z	PUNCHED 0.8MM 25MMX6M OFFSET	Z275 Galvabond	1	9314691806294
HI15MX0.8X25Z	PUNCHED 0.8MM 25MMX15M OFFSET	Z275 Galvabond	1	9314691806300
HI30MX0.8X25Z	PUNCHED 0.8MM 25MMX30M OFFSET	Z275 Galvabond	1	9314691806317
0.8 x 30mm				
HI10MX0.8X30Z	PUNCHED 0.8MM 30MMX10M OFFSET	Z275 Galvabond	1	9314691805969
HI20MX0.8X30Z	PUNCHED 0.8MM 30MMX20M OFFSET	Z275 Galvabond	1	9314691805983
HI30MX0.8X30Z	PUNCHED 0.8MM 30MMX30M OFFSET	Z275 Galvabond	1	9314691805990
HI50MX0.8X30Z	PUNCHED 0.8MM 30MMX50M OFFSET	Z275 Galvabond	1	9314691806003
HI100MX0.8X30Z	PUNCHED 0.8MM 30MMX100M OFFSET	Z275 Galvabond	1	9314691806010
1.0 x 30mm				
HI10MX1.0X30Z	PUNCHED 1.0MM 30MMX10M OFFSET	Z275 Galvabond	1	9314691806034
HI20MX1.0X30Z	PUNCHED 1.0MM 30MMX20M OFFSET	Z275 Galvabond	1	9314691806058
HI30MX1.0X30Z	PUNCHED 1.0MM 30MMX30M OFFSET	Z275 Galvabond	1	9314691806065
HI50MX1.0X30Z	PUNCHED 1.0MM 30MMX50M OFFSET	Z275 Galvabond	1	9314691806072
HI100MX1.0X30Z	PUNCHED 1.0MM 30MMX100M OFFSET	Z275 Galvabond	1	9314691806089
1.2 x 30mm				
HI30MX1.2X30Z	PUNCHED 1.2MM 30MMX30M OFFSET	Z275 Galvabond	1	9314691806164
HI50MX1.2X30Z	PUNCHED 1.2MM 30MMX50M OFFSET	Z275 Galvabond	1	9314691806171

Builder's un-punched strap

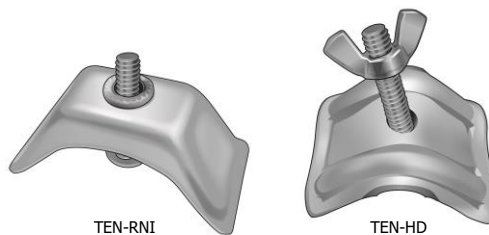


Product Code	Description	Finish Type	Unit Qty	Barcode Number
0.8 x 30mm				
UH30MX0.8X30Z	UNPUNCHED 0.8MM 30MMX30M	Z275 Galvabond	1	9314691806096
1.2 x 30mm				
UH30MX1.2X30Z	UNPUNCHED 1.2MM 30MMX30M	Z275 Galvabond	1	9314691806188
UH50MX1.2X30Z	UNPUNCHED 1.2MM 30MMX50M	Z275 Galvabond	1	9314691806195

Tensioner (Builder's strap / hoop iron)

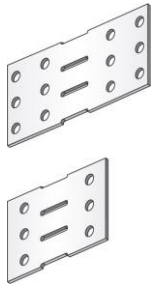
Product Code	Description	Finish Type	Std Carton Qty	Barcode Number
TEN-HD	HOOP IRON TENSIONER HD	Galvabond	10 pkts of 10 in ctn of 100	9314691805433
TEN-RNI	HOOP IRON TENSIONER RNI	Galvabond	20 pkts of 10 in ctn of 200	9314691805563

Note: Used for tensioning Builder's Strap (Hoop Iron).



Material
 TEN-HD – 3mm Galvabond steel
 TEN-RNI - 1.5mm G300 Z275

Heavy duty plate



Product Code	Description	Std Carton Qty	Barcode Number
FBP12	120 x 35 x 3mm	200	9314691701148
FBP13	160 x 35 x 3mm	100	9314691701155
FBP14	200 x 35 x 3mm	100	9314691701162
FBP22	120 x 70 x 3mm	100	9314691701179
FBP23	160 x 70 x 3mm	50	9314691701186
FBP24	200 x 70 x 3mm	50	9314691701193
FBP32	120 x 105 x 3mm	50	9314691701209
FBP34	200 x 105 x 3mm	25	9314691701216
FBP44	200 x 140 x 3mm	25	9314691701223

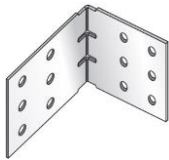
Application

- Use in a wide range of applications – either in vertical, horizontal or angular position
- Join timber beams (end for end)

Advantages

- Made from 3mm galvanised ("Galvabond style") steel

Heavy duty angle



Product Code	Description	Std Carton Qty	Barcode Number
FBCA34	100 x 100 x 105 x 3mm	25	9314691701032
FBCA44	100 x 100 x 140 x 3mm	25	9314691701049
FBCA14	100 x 100 x 35 x 3mm	50	9314691701056
FBCA24	100 x 100 x 70 x 3mm	25	9314691701063
FBCA43	60 x 100 x 140 x 3mm	25	9314691701070
FBCA13	60 x 100 x 35 x 3mm	50	9314691701087
FBCA23	60 x 100 x 70 x 3mm	50	9314691701094
FBCA32	60 x 60 x 105 x 3mm	50	9314691701100
FBCA42	60 x 60 x 140 x 3mm	25	9314691701117
FBCA12	60 x 60 x 35 x 3mm	50	9314691701124
FBCA22	60 x 60 x 70 x 3mm	50	9314691701131

Application

- Use in a wide range of applications – either left or right hand and either in vertical or horizontal position
- Uses include timber supports, internal or external corner supports as well as shelf or stair brackets

Advantage

- Made from 3mm galvanised ("Galvabond style") steel.

Heavy duty angle bracket



Product Code	Description	Finish Type	Std Carton Qty	Barcode Number
HDA230	HD Angle 230x40x40x2	Z275 Galvabond	40	9314691806591

Application

- The TUFF Heavy Duty Angle Bracket is suitable for a wide range of applications.

Advantages

- Made from 2mm Z275 Galvabond material
- Suitable as either left or right hand and either horizontal or vertical position

J-Bolt

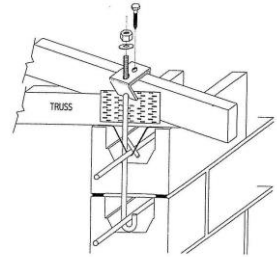
Product Code	Description	Finish Type	Std Bundle Qty	Barcode Number
JB10G	J-Bolt 10mm x 15 course	M10 Galv	6	9314691808298

Application

The TUFF J-Bolt is ideal for securing roof trusses, anchoring footings for decks, etc.

Advantages

- Made from M10 Galvanised Threaded Bar x 1390mm o/a length with U section 85mm length and Ø10mm G300 Galvanised Steel Bar x 180mm length
- Has 2ea M10 Galv Hex Head Nuts and 2ea M10 Galv. Flat Round Washers



Pier bolt

Product Code	Description	Finish Type	Std Bundle Qty	Barcode Number
PB10G	Pier Bolt 10mm x 15 course	M10 Galv	6 (3 lots of 2)	9314691808304
PB12G	Pier Bolt 12mm x 15 course	M12 Galv	6 (3 lots of 2)	9314691808311

Application

The TUFF Pier Bolt is ideal for anchoring footings for decks, foundation walls, etc.

Advantages

- Made from M10 / M12 Q215 Galvanised Threaded Bar x 1500mm overall length and 100mm x 50mm x 6mm G300 Steel
- End plate 100mm x 50mm x 6mm G300 HDG after welded to threaded bar
- Has 2ea M10 / M12 Galv Hex Head Nuts and 2ea M10 / M12 Galv. Flat Round Washers





Fence plate 2 hole bracket

Product Code	Dimensions	Finish Type	Std Carton Qty	Barcode Number
F0079	85mm x 32mm x 3mm	Zinc plated	25	9314691000791

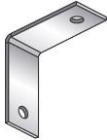
Note: M8 bolt hole size.



Fence plate 3 hole bracket

Product Code	Dimensions	Finish Type	Std Carton Qty	Barcode Number
F0080	140mm x 32mm x 3mm	Zinc plated	25	9314691000807

Note: M8 bolt hole size.



Corner bracket

Product Code	Dimensions	Finish Type	Std Carton Qty	Barcode Number
F0081	72mm x 72mm x 32mm x 3mm	Zinc plated	25	9314691000814

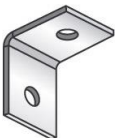
Note: M8 bolt hole size.



Fencing bracket

Product Code	Dimensions	Finish Type	Std Carton Qty	Barcode Number
F0082	100mm x 40mm x 32mm x 3mm	Zinc plated	25	9314691000821

Note: M6 hole size - Slots 7mm x 20mm between centres.



2 hole bent bracket

Product Code	Dimensions	Finish Type	Std Carton Qty	Barcode Number
F0094	45mm x 45mm x 32mm x 3mm	Zinc plated	25	9314691000944

Note: M10 bolt hole size.

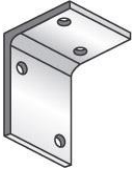


Corner bracket 95

Product Code	Dimensions	Finish Type	Std Carton Qty	Barcode Number
F0134	95mm x 112mm x 32mm x 3mm	Zinc plated	25	9314691001347

Note: M10 bolt hole size - Slot 10.5mm x 20mm between centres.

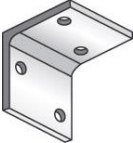
Angle bracket 100



Product Code	Dimensions	Finish Type	Std Carton Qty	Barcode Number
F0083	100mm x 80mm x 75mm wide x 8mm	Zinc plated	10	9314691000838

Note: M10 bolt hole size.

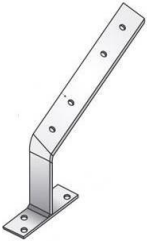
Angle bracket 75



Product Code	Dimensions	Finish Type	Std Carton Qty	Barcode Number
F0084	75mm x 75mm x 75mm wide x 6mm	Zinc plated	10	9314691000845

Note: M10 bolt hole size.

Long heavy duty fascia bracket



Product Code	Dimensions	Finish Type	Std Carton Qty	Barcode Number
F12054	0°	Hot Dip Galv	6	9314691120543
F12055	5°	Hot Dip Galv	6	9314691117697
F12056	12°	Hot Dip Galv	6	9314691120567
F12057	17°	Hot Dip Galv	6	9314691125074
F12058	22.5°	Hot Dip Galv	6	9314691250813
F12059	28°	Hot Dip Galv	6	9314691125081
F12060	35°	Hot Dip Galv	6	9314691250820

Notes:

Used to connect the overhangs of rafters or trusses to fascias or fascia ledgers of a pergola / carport / verandah so that the pergola / carport / verandah can be adequately supported from the fascia line

- Available in various angles
- Made from 50mm x 6mm steel
- Rafter section - 550mm + 150mm length
- Fascia section - 165mm wide
- Hot dip galvanised
- M10 hole size

Extra long heavy duty fascia bracket



Product Code	Dimensions	Finish Type	Std Bundle Qty	Barcode Number
F12084	22.5°	Hot Dip Galv	2	9314691805471
F12085	25°	Hot Dip Galv	2	9314691805631
F12086	28°	Hot Dip Galv	2	9314691805648

Notes:

Used to connect the overhangs of rafters or trusses to fascias or fascia ledgers of a pergola / carport / verandah so that the pergola / carport / verandah can be adequately supported from the fascia line

- Available in various angles
- Made from 8mm steel
- Rafter section - 1120mm + 150mm length
- Fascia section - 170mm wide
- Hot dip galvanised
- M12 hole size

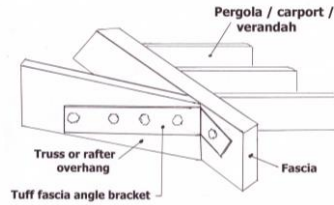
Fascia angle bracket



Product Code	Dimensions	Finish Type	Std Carton Qty	Barcode Number
F12061	Left Hand	Hot Dip Galv	20	9314691701278
F12062	Right Hand	Hot Dip Galv	20	9314691701285

Notes:

- Made from 50mm x 3mm steel
- Rafter section – 295mm centre line of bend
- Fascia section – 55mm centre line of bend
- Hot dip galvanised
- M12 hole size



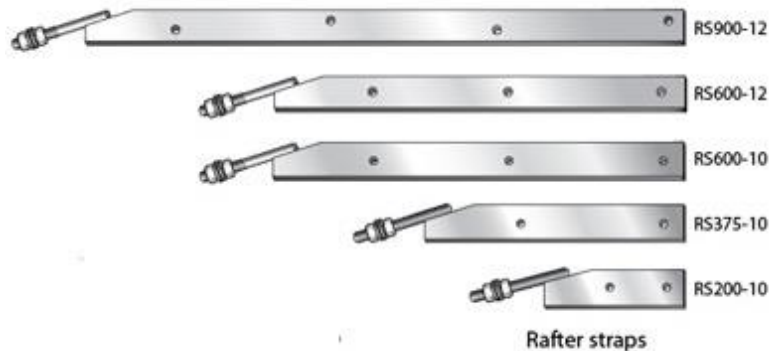
Rafter strap



Product Code	Description	Bolt Size	Finish Type	Std Bundle Qty	Barcode Number
RS200-10	Rafter Strap x 200mm long	M10	Hot Dip Galv	10	9314691807178
RS375-10	Rafter Strap x 375mm long	M10	Hot Dip Galv	10	9314691807192
RS600-10	Rafter Strap x 600mm long	M10	Hot Dip Galv	10	9314691808281
RS600-12	Rafter Strap x 600mm long	M12	Hot Dip Galv	10	9314691807208
RS900-12	Rafter Strap x 900mm long	M12	Hot Dip Galv	6	9314691807215

Note

Fix rafter straps to house roof rafter and bolt securely with the threaded securing bolt protruding from the fascia - ensuring all protruding rafter bracket bolts are on level plain before bolting strap to rafter. These should be at no greater than 1200mm centres.



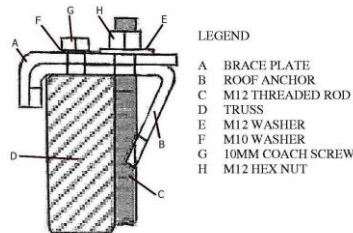
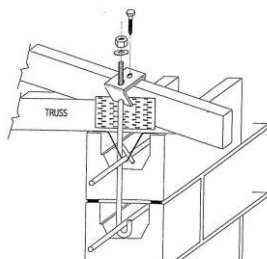
Bond beam truss bracket



Product Code	Dimensions (LxWxThick)	Finish Type	Std Carton Qty	Barcode Number
BB100X14X14	100mm x 75mm x 10mm (2x14mm hole)	Hot Dip Galv	25	9314691805488
BB105X14X14	105mm x 50mm x 8mm (2x14mm hole)	Hot Dip Galv	50	9314691806843
BB135X14X14	135mm x 75mm x 10mm (2x14mm hole)	Hot Dip Galv	20	9314691805495
BB170X18X18	170mm x 75mm x 12mm (2x18mm hole)	Hot Dip Galv	10	9314691805501
BB200X14X17	200mm x 50 mm x 6 mm (1x14mm & 1x17mm hole)	Hot Dip Galv	25	9314691800476
BB250X14X17	250mm x 50 mm x 6 mm (1x14mm & 1x17mm hole)	Hot Dip Galv	25	9314691800483
BB200X17X17	200mm x 50 mm x 6 mm (2x17mm hole)	Hot Dip Galv	25	9314691800490
BB250X17X17	250mm x 50 mm x 6 mm (2x17mm hole)	Hot Dip Galv	25	9314691800506
BB200X17X19	200mm x 50 mm x 6 mm (1x17mm & 1x19mm hole)	Hot Dip Galv	25	9314691800513
BB250X17X19	250mm x 50 mm x 6 mm (1x17mm & 1x19mm hole)	Hot Dip Galv	25	9314691800520
BB200X14X19	200mm x 50 mm x 6 mm (1x14mm & 1x19mm hole)	Hot Dip Galv	25	9314691800537

Roofing anchor

Product Code	Description	Finish Type	Unit Qty	Barcode Number
RA10KN	ROOFING ANCHOR 10KN NO BRACE PLATE	Galv.	5	9314691805266
RA27KN	ROOFING ANCHOR 27KN	Galv.	5	9314691805273



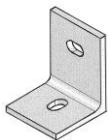
LEGEND

- A BRACE PLATE
- B ROOF ANCHOR
- C M12 THREADED ROD
- D TRUSS
- E M12 WASHER
- F M10 WASHER
- G 10MM COACH SCREW
- H M12 HEX NUT

RA27KN

Roof anchor and brace plate material: 50 x 6mm flat steel plate

HD Angle bracket with slots – 17mm wide x 27mm long (Truss Bracket)



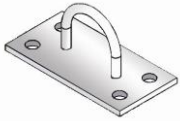
Product Code	Dimensions	Finish Type	Std Carton Qty	Barcode Number
F0237	100mm X 80mm X 75mm X 8mm	Hot Dip Galv	15	9314691801022

Z-bracket



Product Code	Dimensions	Finish Type	Std Carton Qty	Barcode Number
ZBH	104mm x 50mm x 5mm	Hot Dip Galv	10	9314691800964

D-anchor bracket



Product Code	Dimensions	Hole Size	Finish Type	Std Carton Qty	Barcode Number
DA110X2H	110mm x 50mm x 5mm	2 x M10 clearance	Hot Dip Galv	5	9314691805235
DA100X4H	100mm x 50mm x 5mm	4 x M6 clearance	Hot Dip Galv	5	9314691805228

Notes:

- Multi-purpose tie down brackets
- Hot dip galvanised

Mending plate heavy duty



Product Code	Dimensions	Finish Type	Std Carton Qty	Barcode Number
MPHD30050	300mm x 50mm x 6mm	Hot Dip Galv	5	9314691805099
MPHD45050	450mm x 50mm x 6mm	Hot Dip Galv	5	9314691805204
MPHD60075	600mm x 75mm x 6mm	Hot Dip Galv	5	9314691805211

Note: M12 hole size

Angle bracket



ANGLE BRACKET with 1ea M12 hole each side

Product Code	Dimensions	Finish Type	Std Carton Qty	Barcode Number
F0200	40mm x 40mm x 40mm x 5mm	Hot Dip Galv	25	9314691800544
F0201	50mm x 50mm x 50mm x 5mm	Hot Dip Galv	25	9314691800551
F0202	65mm x 65mm x 65mm x 5mm	Hot Dip Galv	25	9314691800568
F0203	90mm x 90mm x 75mm x 6mm	Hot Dip Galv	10	9314691800575

ANGLE BRACKET with M12 holes – 2ea holes on long side and 1ea hole on short length

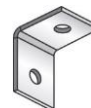
F0204	40mm x 80mm x 40mm x 5mm	Hot Dip Galv	25	9314691800582
F0205	50mm x 100mm x 50mm x 5mm	Hot Dip Galv	25	9314691800599
F0206	65mm x 130mm x 65mm x 5mm	Hot Dip Galv	25	9314691800605
F0207	90mm x 150mm x 75mm x 6mm	Hot Dip Galv	10	9314691800612

ANGLE BRACKET with M12 holes – 2ea holes on each side

F0208	80mm x 80mm x 40mm x 5mm	Hot Dip Galv	25	9314691800629
F0209	100mm x 100mm x 50mm x 5mm	Hot Dip Galv	25	9314691800636
F0210	130mm x 130mm x 65mm x 5mm	Hot Dip Galv	10	9314691800643
F0211	150mm x 150mm x 75mm x 6mm	Hot Dip Galv	10	9314691800650

ANGLE BRACKET with 1ea M10 hole each side

F0212	40mm x 40mm x 40mm x 5mm	Hot Dip Galv	25	9314691800667
F0213	50mm x 50mm x 50mm x 5mm	Hot Dip Galv	25	9314691800674



Angle bracket with stay



Zinc plated

Product Code	Dimensions	Finish Type	Std Carton Qty	Barcode Number
F0214	200mm x 200mm x 25mm x 5mm	Zinc plated	10	9314691800681
F0215	250mm x 200mm x 25mm x 5mm	Zinc plated	10	9314691800698
F0216	250mm x 250mm x 25mm x 5mm	Zinc plated	10	9314691800704
F0217	300mm x 200mm x 25mm x 5mm	Zinc plated	10	9314691800711
F0218	300mm x 300mm x 25mm x 5mm	Zinc plated	10	9314691800728
F0219	350mm x 250mm x 25mm x 5mm	Zinc plated	10	9314691800735
F0220	350mm x 350mm x 25mm x 5mm	Zinc plated	10	9314691800742
F0221	400mm x 250mm x 25mm x 5mm	Zinc plated	10	9314691800759
F0222	500mm x 400mm x 25mm x 5mm	Zinc plated	10	9314691800766

Galvanised

Product Code	Dimensions	Finish Type	Std Carton Qty	Barcode Number
F0314	200mm x 200mm x 25mm x 5mm	Galvanised	10	9314691804665
F0315	250mm x 200mm x 25mm x 5mm	Galvanised	10	9314691804672
F0316	250mm x 250mm x 25mm x 5mm	Galvanised	10	9314691804689
F0317	300mm x 200mm x 25mm x 5mm	Galvanised	10	9314691804696
F0318	300mm x 300mm x 25mm x 5mm	Galvanised	10	9314691804702
F0319	350mm x 250mm x 25mm x 5mm	Galvanised	10	9314691804719
F0320	350mm x 350mm x 25mm x 5mm	Galvanised	10	9314691804726
F0321	400mm x 250mm x 25mm x 5mm	Galvanised	10	9314691804733
F0322	500mm x 400mm x 25mm x 5mm	Galvanised	10	9314691804740

Note: M6 hole size

Shelf angle bracket



Zinc plated

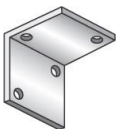
Product Code	Dimensions	Finish Type	Std Bundle Qty	Barcode Number
F0223	100mm x 75mm x 20mm x 5mm	Zinc plated	10	9314691800773
F0224	125mm x 100mm x 20mm x 5mm	Zinc plated	10	9314691800780
F0225	150mm x 125mm x 20mm x 5mm	Zinc plated	10	9314691800797
F0226	200mm x 150mm x 20mm x 5mm	Zinc plated	10	9314691800803
F0227	250mm x 200mm x 20mm x 5mm	Zinc plated	10	9314691800810

Galvanised

Product Code	Dimensions	Finish Type	Std Bundle Qty	Barcode Number
F0323	100mm x 75mm x 20mm x 5mm	Galvanised	10	9314691804757
F0324	125mm x 100mm x 20mm x 5mm	Galvanised	10	9314691804764
F0325	150mm x 125mm x 20mm x 5mm	Galvanised	10	9314691804771
F0326	200mm x 150mm x 20mm x 5mm	Galvanised	10	9314691804788
F0327	250mm x 200mm x 20mm x 5mm	Galvanised	10	9314691804795

Note: M6 hole size

Light-use angle bracket



Zinc plated

Product Code	Dimensions	Finish Type	Std Carton Qty	Barcode Number
F0228	40mm x 40mm x 40mm x 3mm	Zinc plated	25	9314691800827
F0229	50mm x 50mm x 40mm x 3mm	Zinc plated	25	9314691800834
F0230	75mm x 75mm x 40mm x 3mm	Zinc plated	25	9314691800841
F0231	100mm x 100mm x 40mm x 3mm	Zinc plated	25	9314691800858

Galvanised

Product Code	Dimensions	Finish Type	Std Carton Qty	Barcode Number
F0328	40mm x 40mm x 40mm x 3mm	Galvanised	25	9314691804801
F0329	50mm x 50mm x 40mm x 3mm	Galvanised	25	9314691804818
F0330	75mm x 75mm x 40mm x 3mm	Galvanised	25	9314691804825
F0331	100mm x 100mm x 40mm x 3mm	Galvanised	25	9314691804832

Note: M6 hole size

Heavy-use angle bracket



Zinc plated

Product Code	Dimensions (L x L x W x Thickness)	Finish Type	Std Carton Qty	Barcode Number
F0232	50mm x 50mm x 40mm x 5mm	Zinc plated	25	9314691800865
F0233	75mm x 75mm x 40mm x 5mm	Zinc plated	25	9314691800872
F0234	100mm x 100mm x 40mm x 5mm	Zinc plated	25	9314691800889
F0235	150mm x 150mm x 40mm x 5mm	Zinc plated	25	9314691800896
F0236	200mm x 200mm x 40mm x 5mm	Zinc plated	25	9314691800902

Galvanised

Product Code	Dimensions (L x L x W x Thickness)	Finish Type	Std Carton Qty	Barcode Number
F0332	50mm x 50mm x 40mm x 5mm	Galvanised	25	9314691804849
F0333	75mm x 75mm x 40mm x 5mm	Galvanised	25	9314691804856
F0334	100mm x 100mm x 40mm x 5mm	Galvanised	25	9314691804863
F0335	150mm x 150mm x 40mm x 5mm	Galvanised	25	9314691804870
F0336	200mm x 200mm x 40mm x 5mm	Galvanised	25	9314691804887

Note: M6 hole size

Angle connector

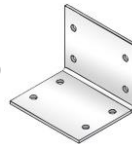


Product Code	Dimensions	Finish Type	Std Carton Qty	Barcode Number
AC757575	75mm x 75mm x 75mm x 6mm	Hot Dip Galv	10	9314691805594
AC1506363	150mm x 63mm x 63mm x 5mm	Hot Dip Galv	5	9314691805242
AC100100100	100mm x 100mm x 100mm x 8mm	Hot Dip Galv	5	9314691805259
AC2406363	240mm x 63mm x 63mm x 6mm	Hot Dip Galv	5	9314698050112
AC180150150	180mm x 150mm x 150mm x 6mm	Hot Dip Galv	5	9314698050129

Note: M12 hole size



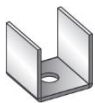
AC180150150



AC1506363 / AC2406363



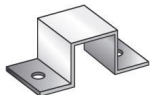
Steel post inner bracket



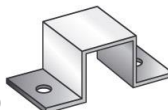
Product Code	Dimensions	Finish Type	Std Carton Qty	Barcode Number
FPS50	45mm x 42mm x 45mm x 3mm	Hot Dip Galv	50	9314691000500
FPS65	60mm x 45mm x 60mm x 3mm	Hot Dip Galv	50	9314691000654
FPS75	70mm x 45mm x 70mm x 3mm	Hot Dip Galv	50	9314691000753
FPS90	To suit 90mm Duragalv System Post - 85mm wide by 3mm	Hot Dip Galv	25	9314691000906

Notes:

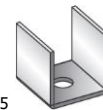
- Ideal for steel fence posts
- FPS50–PS75 – M12 hole size
- FPS90 – M10 hole size



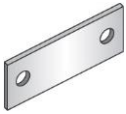
FPS90



FPS50 - FPS75



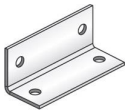
Purlin angle bracket plate



Product Code	Description	Dimensions	Finish Type	Std Carton Qty	Barcode Number
FP100	Purlin P100	95mm x 51mm x 3mm	Hot Dip Galv	50	9314691001019
FP150	Purlin P150	145mm x 49mm x 3mm	Hot Dip Galv	50	9314691001514
FP200	Purlin P200	192mm x 65mm x 3mm	Hot Dip Galv	50	9314691002016

Note: M12 hole size

Purlin angle bracket



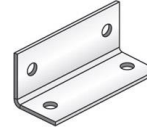
Product Code	Description	Dimensions	Finish Type	Std Carton Qty	Barcode Number
FA100	Purlin c100	106mm x 65mm x 52mm x 3mm	Hot Dip Galv	50	9314691001002
FA150	Purlin c150	145mm x 50mm x 50mm x 3mm	Hot Dip Galv	50	9314691001507
FA200	Purlin c200	195mm x 65mm x 65mm x 3mm	Hot Dip Galv	25	9314691002009

Note: M12 hole size

FA100



FA150 / FA200



Stair tread bracket



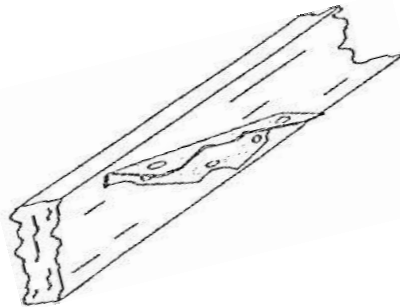
Product Code	Description	Dimensions	Finish Type	Std Carton Qty	Barcode Number
SB001	Stair tread bracket – Z80	3mm Plate x 200mm long	Z80	20	9314691806393

Application

- Used by builders or DIY for manufacturing own stair stringers – fixing timber treads to the Stair Tread Bracket

Advantages

- 3mm steel – Z80 to provide long term corrosive protection.
- Pre-drilled with 2 slotted holes 11 x 18mm at 150mm centres to match all popular step treads on the market.
- Can be attached to stringer either by (1) weld – both sides (steel stringer) or (2) 3 x 8mm coach screws (timber stringer)



Stair stringers

Standard Steel Stair Stringers are fabricated and hot dip galvanised with a Rise of 175mm and a Going of 250mm. Stair Stringers are designed to be suitable for residential / domestic / office / commercial applications with a clear span to 17 steps when installed with the use of either aluminium step treads or timber treads to a maximum of 1200mm tread width per pair. For wider tread spans a third central stringer must be used.

The standard Stringers are constructed to suit 50mm treads to achieve the maximum gap of 125mm between the treads.

Stair Stringers are sold as a pair. Footing brackets (on-concrete and landing to landing) are ordered separately. Footing configurations - In-ground, On Concrete and Landing to Landing are illustrated are below.

In general applications using either aluminium step treads or timber treads, no support post(s) are required.

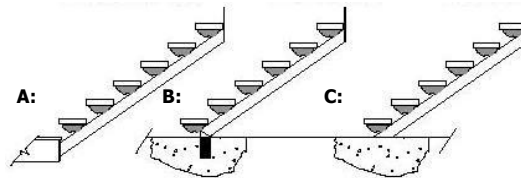
Stair Stringers are engineered to support the weight for commercial 4kPa loads which is double that of residential 2kPa.

Compliant to all relevant Australian Standard Building Codes.

The Stair Stringers are either made from

- 75 x 50 x 2.5mm RHS - 1 step ~ 6 step Stair Stringers
- 100 x 50 x 3mm RHS - 7 step ~ 12 step Stair Stringers, and
- 150 x 50 x 3mm RHS - 13 step ~ 17 step Stair Stringers.

- A:** Landing to Landing
- B:** In Ground Leg
- C:** On Ground Concrete

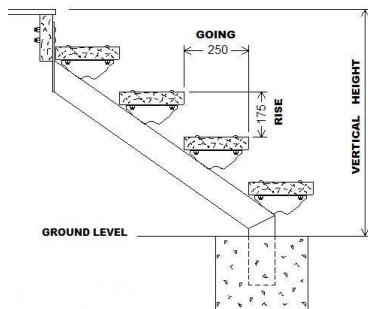


IN-GROUND STAIR STRINGERS (see illustration below)

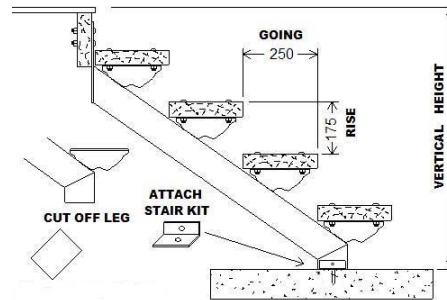
The In-Ground foot configuration is a popular form of Stair Stringer. After securing the top hanger brackets in place, the base is concreted into a suitable footing in the ground.

- The top plate protrudes 200mm above frame with top hole at 175mm.
- The leg on the Stringer is 200mm long (front side), enabling for ample anchorage into a concrete footing.

Available up to 17 steps and are hot dip galvanised.



IN GROUND STAIR STRINGER



ON CONCRETE STAIR STRINGER

STAIR STRINGERS continued

ON CONCRETE STAIR STRINGERS (see illustration on previous page)

For On Concrete applications, the In-Ground Stair Stringers are used and modified. They are bolted at the top and the legs of the In-Ground style Stair Stringer are cut to the desired length and then a hole drilled in each stringer and an On Concrete Stair bracket (bolt-on concrete kit) is bolted to each leg. The Stair Stringer legs are then able to be anchor bolted down into place.

A Bolt-On Concrete Kit (Product code: **BO-CK**) comprises of 2ea 65x65x5mm HDG angle brackets and 2ea M12 x 75mm Hex head bolts for fixing the legs and 2ea M12 x 75 true bolts for anchoring to the concrete – see photo below.



Bolt-On Concrete Kit – **P/C:** BO-CK (Barcode 9314691807741)
Reference 'C' in first illustration above



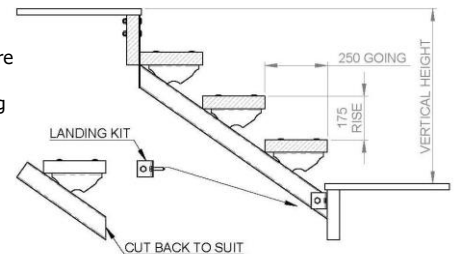
Bolt-On Landing Kit – **P/C:** BO-LK (Barcode 9314691807734)
Reference 'A' in first illustration above

LANDING TO LANDING STAIR STRINGERS (see illustration)

For Landing to Landing applications, the In-Ground Stair Stringers are used and modified. They are bolted at the top and the legs of the In-Ground style Stair Stringer are cut to the desired length and a hole drilled through the stringer and 1ea Landing Stair brackets are bolted to each leg using a M12 x 75 Hex head bolt. The Stair Stringer legs are then able to be anchored into place using the supplied coach screws.

Note: Please allow one extra tread for cutting off.

A Bolt-On Landing Kit (Product code: **BO-LK**) comprises of 4ea 65x65x5mm HDG angle brackets and 2ea M12 x 75mm Hex head bolts for fixing the legs and 4ea M12 x 65mm coach screws for securing to the lower landing – see photo above.



LANDING TO LANDING STAIR STRINGER

PRICING of Stair Stringers (Residential / Commercial) and Accessories. – as per supplied pricing structure

STAIR STRINGERS – RESIDENTIAL / COMMERCIAL

PRODUCT CODE	PRODUCT DESCRIPTION	(L/H + R/H) PAIR	BARCODE	Finish	Vertical Height (mm)	Horizontal Length (mm)	Weight per pair (kg)
STG-1S	STAIR STRINGER - 1 STEP	LH+RH (PAIR)	9314691807390	HDG	350	250	7
STG-2S	STAIR STRINGER - 2 STEP	LH+RH (PAIR)	9314691807406	HDG	525	500	12
STG-3S	STAIR STRINGER - 3 STEP	LH+RH (PAIR)	9314691807413	HDG	700	750	17
STG-4S	STAIR STRINGER - 4 STEP	LH+RH (PAIR)	9314691807420	HDG	875	1000	21
STG-5S	STAIR STRINGER - 5 STEP	LH+RH (PAIR)	9314691807437	HDG	1050	1250	26
STG-6S	STAIR STRINGER - 6 STEP	LH+RH (PAIR)	9314691807444	HDG	1225	1500	36
STG-7S	STAIR STRINGER - 7 STEP	LH+RH (PAIR)	9314691807451	HDG	1400	1750	42
STG-8S	STAIR STRINGER - 8 STEP	LH+RH (PAIR)	9314691807468	HDG	1575	2000	47
STG-9S	STAIR STRINGER - 9 STEP	LH+RH (PAIR)	9314691807475	HDG	1750	2250	53
STG-10S	STAIR STRINGER - 10 STEP	LH+RH (PAIR)	9314691807482	HDG	1925	2500	58
STG-11S	STAIR STRINGER - 11 STEP	LH+RH (PAIR)	9314691807499	HDG	2100	2750	64
STG-12S	STAIR STRINGER - 12 STEP	LH+RH (PAIR)	9314691807505	HDG	2275	3000	69
STG-13S	STAIR STRINGER - 13 STEP	LH+RH (PAIR)	9314691807512	HDG	2450	3250	96
STG-14S	STAIR STRINGER - 14 STEP	LH+RH (PAIR)	9314691807529	HDG	2625	3500	103
STG-15S	STAIR STRINGER - 15 STEP	LH+RH (PAIR)	9314691807536	HDG	2800	3750	111
STG-16S	STAIR STRINGER - 16 STEP	LH+RH (PAIR)	9314691807543	HDG	2975	4000	118
STG-17S	STAIR STRINGER - 17 STEP	LH+RH (PAIR)	9314691807550	HDG	3150	4250	125
BO-CK	BOLT-ON CONCRETE KIT		9314691807741	HDG			
BO-LK	BOLT-ON LANDING KIT		9314691807734	HDG			

Advans-Xtracote threaded rod – Class 4.8 steel



Product Code	Rod Size	Length	Finish Type	Std Pack Qty	Barcode Number
M06					
CR1000XM6Z	M6	1.0m	Advans-Xtracote	10	9314691803316
CR3000XM6Z	M6	3.0m	Advans-Xtracote	10	9314691803323
M08					
CR1000XM8Z	M8	1.0m	Advans-Xtracote	10	9314691803330
CR3000XM8Z	M8	3.0m	Advans-Xtracote	10	9314691803347
M10					
CR1000XM10Z	M10	1.0m	Advans-Xtracote	10	9314691802081
CR3000XM10Z	M10	3.0m	Advans-Xtracote	10	9314691700745
CR3600XM10Z	M10	3.6m	Advans-Xtracote	10	9314691700776
M12					
CR110XM12Z	M12	.110m	Advans-Xtracote	200	9314691802098
CR160XM12Z	M12	.160m	Advans-Xtracote	200	9314691801855
CR600XM12Z	M12	.600m	Advans-Xtracote	10	9314691700837
CR1000XM12Z	M12	1.0m	Advans-Xtracote	10	9314691802104
CR2440XM12Z	M12	2.44m	Advans-Xtracote	10	9314691700677
CR2570XM12Z	M12	2.57m	Advans-Xtracote	10	9314691700707
CR2700XM12Z	M12	2.7m	Advans-Xtracote	10	9314691700721
CR3000XM12Z	M12	3.0m	Advans-Xtracote	10	9314691700752
CR3600XM12Z	M12	3.6m	Advans-Xtracote	10	9314691700783
M16					
CR1000XM16Z	M16	1.0m	Advans-Xtracote	10	9314691802128
CR2440XM16Z	M16	2.44m	Advans-Xtracote	5	9314691700684
CR2700XM16Z	M16	2.7m	Advans-Xtracote	5	9314691700738
CR3000XM16Z	M16	3.0m	Advans-Xtracote	5	9314691700769
CR3600XM16Z	M16	3.6m	Advans-Xtracote	5	9314691700790
M20					
CR260XM20Z	M20	.260m	Advans-Xtracote	50	9314691802135
CR1000XM20Z	M20	1.0m	Advans-Xtracote	5	9314691802142
CR3000XM20Z	M20	3.0m	Advans-Xtracote	2	9314691802159
M24					
CR1000XM24Z	M24	1.0m	Advans-Xtracote	5	9314691803293
CR3000XM24Z	M24	3.0m	Advans-Xtracote	2	9314691803309
M30					
CR1000XM30Z	M30	1.0m	Advans-Xtracote	2	9314691803354
CR3000XM30Z	M30	3.0m	Advans-Xtracote	2	9314691803361

Notes:

- Used in wide range of applications – available in many thread sizes and lengths.
- Typical uses include ground anchors, concrete anchors, post tensioning, tie-throughs.

Coupler



Galvanised

Product Code	Description	A/F x Length	Finish Type	Std Carton Qty	Barcode Number
M10COUPLER	M10 Coupler	15.2mm x 30mm	Galvanised	100	9314691801183
M12COUPLER	M12 Coupler	17mm x 36mm	Galvanised	100	9314691801190
M16COUPLER	M16 Coupler	21mm x 47mm	Galvanised	100	9314691801206
M20COUPLER	M20 Coupler	30mm x 48mm	Galvanised	100	9314691801213
M24COUPLER	M24 Coupler	35mm x 48mm	Galvanised	50	9314691801220

Advans-Xtracote

Product Code	Description	A/F x Length	Finish Type	Std Carton Qty	Barcode Number
M10COUPLERZ	M10 Coupler	15.2mm x 30mm	Advans-Xtracote	100	9314691700844
M12COUPLERZ	M12 Coupler	17mm x 36mm	Advans-Xtracote	100	9314691700851
M16COUPLERZ	M16 Coupler	21mm x 47mm	Advans-Xtracote	100	9314691700868
M20COUPLERZ	M20 Coupler	30mm x 48mm	Advans-Xtracote	100	9314691801947
M24COUPLERZ	M24 Coupler	35mm x 48mm	Advans-Xtracote	50	9314691804023

Note: Couplers are usually used as connectors for bolts or threaded bar (tie rods) to extend length

Galvanised threaded rod – Class 4.8 steel



Product Code	Rod Size	Length	Finish Type	Std Pack Qty	Barcode Number
M10					
CR1000XM10T	M10	1.0m	Galvanised	10	9314691701292
CR2440XM10T	M10	2.44m	Galvanised	10	9314691700660
CR3000XM10T	M10	3.0m	Galvanised	10	9314691701414
CR3600XM10T	M10	3.6m	Galvanised	10	9314691701445
M12					
CR110XM12T	M12	.110m	Galvanised	200	9314691802005
CR1000XM12T	M12	1.0m	Galvanised	10	9314691701308
CR1200XM12T	M12	1.2m	Galvanised	10	9314691701339
CR2440XM12T	M12	2.44m	Galvanised	10	9314691701346
CR2570XM12T	M12	2.57m	Galvanised	10	9314691701377
CR2700XM12T	M12	2.7m	Galvanised	10	9314691701391
CR3000XM12T	M12	3.0m	Galvanised	10	9314691701421
CR3600XM12T	M12	3.6m	Galvanised	10	9314691701452
M16					
CR190XM16T	M16	.190m	Galvanised	100	9314691802012
CR1000XM16T	M16	1.0m	Galvanised	10	9314691701315
CR1200XM16T	M16	1.2m	Galvanised	10	9314691802029
CR2440XM16T	M16	2.44m	Galvanised	5	9314691701353
CR2700XM16T	M16	2.7m	Galvanised	5	9314691701407
CR3000XM16T	M16	3.0m	Galvanised	5	9314691701438
CR3600XM16T	M16	3.6m	Galvanised	5	9314691701469
M20					
CR1000XM20T	M20	1.0m	Galvanised	5	9314691802043
CR3000XM20T	M20	3.0m	Galvanised	2	9314691702050
M24					
CR1000XM24T	M24	1.0m	Galvanised	5	9314691802067
CR3000XM24T	M24	3.0m	Galvanised	2	9314691802074
M30					
CR1000XM30T	M30	1.0m	Galvanised	2	9314691803231
CR3000XM30T	M30	3.0m	Galvanised	2	9314691803248

Note:

- Used in wide range of applications – available in many thread sizes and lengths
- Typical uses include ground anchors, concrete anchors, post tensioning, tie-throughs

Hexagon nut – Class 5



Galvanised

Product Code	Description	Finish Type	Std Carton Qty	Barcode Number
HEXNUTM10H	M10 Hex Nut	Galvanised	100	9314691801121
HEXNUTM12H	M12 Hex Nut	Galvanised	100	9314691801145
HEXNUTM16H	M16 Hex Nut	Galvanised	100	9314691801169
HEXNUTM20H	M20 Hex Nut	Galvanised	100	9314691801923
HEXNUTM24H	M24 Hex Nut	Galvanised	100	9314691801930

Advans-Xtracote

Product Code	Description	Finish Type	Std Carton Qty	Barcode Number
HEXNUTM10Z	M10 Hex Nut	Advans-Xtracote	100	9314691700806
HEXNUTM12Z	M12 Hex Nut	Advans-Xtracote	100	9314691700813
HEXNUTM16Z	M16 Hex Nut	Advans-Xtracote	100	9314691700820
HEXNUTM20Z	M20 Hex Nut	Advans-Xtracote	100	9314691801978

Note:

- Available in many sizes (M10 – M20/M24)
- Available in either corrosive resistant coatings (galvanised or Advans-Xtracote zinc coating)

Round washer – conforming to AS 1237



Galvanised

Product Code	Description	Finish Type	O.D x Thickness	Std Carton Qty	Barcode Number
RWM8H	M8 Round Washer	Galvanised	19 x 1.8mm	5000	9314691803262
RWM10H	M10 Round Washer	Galvanised	24 x 2mm	2400	9314691701605
RWM12H	M12 Round Washer	Galvanised	28 x 2.5mm	1800	9314691701612
RWM16H	M16 Round Washer	Galvanised	34 x 3mm	1000	9314691701629
RWM20H	M20 Round Washer	Galvanised	39 x 3mm	800	9314691801909
RWM24H	M24 Round Washer	Galvanised	49 x 4mm	300	9314691801916
RWM30H	M30 Round Washer	Galvanised	60 x 5mm	200	9314691803279

Advans-Xtracote

Product Code	Description	Finish Type	O.D x Thickness	Std Carton Qty	Barcode Number
RWM6Z	M6 Round Washer	Advans-Xtracote	16 x 1.4mm	7500	9314691803408
RWM8Z	M8 Round Washer	Advans-Xtracote	19 x 1.8mm	5000	9314691803415
RWM10Z	M10 Round Washer	Advans-Xtracote	24 x 2mm	2400	9314691700882
RWM12Z	M12 Round Washer	Advans-Xtracote	28 x 2.5mm	1800	9314691700889
RWM16Z	M16 Round Washer	Advans-Xtracote	34 x 3mm	1000	9314691700905
RWM20Z	M20 Round Washer	Advans-Xtracote	39 x 3mm	800	9314691801961
RWM24Z	M24 Round Washer	Advans-Xtracote	49 x 4mm	350	9314691803422

Square washer



Galvanised

Product Code	Description	Finish Type	Std Carton Qty	Barcode Number
SW38X38X3M10H	M10 38mm x 38mm x 3mm	Galvanised	400	9314691801268
SW38X38X3M12H	M12 38mm x 38mm x 3mm	Galvanised	400	9314691801299
SW38X38X3M16H	M16 38mm x 38mm x 3mm	Galvanised	400	9314691801312
SW50X50X3M10H	M10 50mm x 50mm x 3mm	Galvanised	300	9314691801336
SW50X50X3M12H	M12 50mm x 50mm x 3mm	Galvanised	300	9314691801350
SW50X50X3M16H	M16 50mm x 50mm x 3mm	Galvanised	300	9314691801374
SW50X50X5M10H	M10 50mm x 50mm x 5mm	Galvanised	200	9314691801275
SW50X50X5M12H	M12 50mm x 50mm x 5mm	Galvanised	200	9314691801411
SW50X50X5M16H	M16 50mm x 50mm x 5mm	Galvanised	200	9314691801435
SW65X65X5M16H	M16 65mm x 65mm x 5mm	Galvanised	150	9314691801459
SW65X65X5M20H	M20 65mm x 65mm x 5mm	Galvanised	150	9314691801824
SW75X75X6M20H	M20 75mm x 75mm x 6mm	Galvanised	50	9314691804184
SW75X75X6M24H	M24 75mm x 75mm x 6mm	Galvanised	50	9314691801831

Advans-Xtracote

Product Code	Description	Finish Type	Std Carton Qty	Barcode Number
SW38X38X3M10Z	M10 38mm x 38mm x 3mm	Advans-Xtracote	400	9314691700929
SW38X38X3M12Z	M12 38mm x 38mm x 3mm	Advans-Xtracote	400	9314691700936
SW38X38X3M16Z	M16 38mm x 38mm x 3mm	Advans-Xtracote	400	9314691700943
SW50X50X3M10Z	M10 50mm x 50mm x 3mm	Advans-Xtracote	300	9314691700950
SW50X50X3M12Z	M12 50mm x 50mm x 3mm	Advans-Xtracote	300	9314691700967
SW50X50X3M16Z	M16 50mm x 50mm x 3mm	Advans-Xtracote	300	9314691700974
SW50X50X5M10Z	M10 50mm x 50mm x 5mm	Advans-Xtracote	200	9314691801954
SW50X50X5M12Z	M12 50mm x 50mm x 5mm	Advans-Xtracote	200	9314691700998
SW50X50X5M16Z	M16 50mm x 50mm x 5mm	Advans-Xtracote	200	9314691701001
SW65X65X5M16Z	M16 65mm x 65mm x 5mm	Advans-Xtracote	150	9314691701018
SW65X65X5M20Z	M20 65mm x 65mm x 5mm	Advans-Xtracote	150	9314691701025
SW75X75X6M24Z	M24 75mm x 75mm x 6mm	Advans-Xtracote	50	9314691803392

Starter bar



Galvanised

Product Code	Description	Finish Type	Std Carton Qty	Barcode Number
M12				
SB180X50M12	180mm x 50mm x M12	Galvanised	100	9314691800971
SB200X150M12	200mm x 150mm x M12	Galvanised	100	9314691800988
SB150X100M12	150mm x 100mm x M12	Galvanised	100	9314691801343
SB300X50M12	300mm x 50mm x M12	Galvanised	100	9314691801008
M16				
SB200X150M16	200mm x 150mm x M16	Galvanised	50	9314691801995
SB300X50M16	300mm x 50mm x M16	Galvanised	50	9314691801381

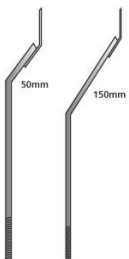
Advans-Xtracote

Product Code	Description	Finish Type	Std Carton Qty	Barcode Number
M12				
SB180X50M12Z	180mm x 50mm x M12	Advans-Xtracote	100	9314691700578
SB200X150M12Z	200mm x 150mm x M12	Advans-Xtracote	100	9314691700585
SB150X100M12Z	150mm x 100mm x M12	Advans-Xtracote	100	9314691700561
SB300X50M12Z	300mm x 50mm x M12	Advans-Xtracote	100	9314691700608
SB400X50M12Z	400mm x 50mm x M12	Advans-Xtracote	50	9314691805587
M16				
SB200X150M16Z	200mm x 150mm x M16	Advans-Xtracote	50	9314691700592
SB300X50M16Z	300mm x 50mm x M16	Advans-Xtracote	50	9314691700615

Notes:

- Embedded in concrete base, used to assist in securing timber frames or other structures.
- Can be embedded into retaining walls to anchor wooden sill plates.

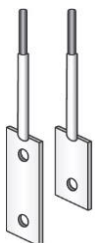
Offset anchor bolt



Product Code	Description	Finish Type	Std Carton Qty	Barcode Number
OAB300X50M12	M12 300mm x 50mm	Hot Dip Galv	20	9314691801473
OAB350X50M12	M12 350mm x 50mm	Hot Dip Galv	20	9314691801480
OAB400X50M12	M12 400mm x 50mm	Hot Dip Galv	20	9314691801497
OAB450X50M12	M12 450mm x 50mm	Hot Dip Galv	20	9314691801503
OAB500X50M12	M12 500mm x 50mm	Hot Dip Galv	20	9314691801510
OAB300X150M12	M12 300mm x 150mm	Hot Dip Galv	20	9314691801527
OAB350X150M12	M12 350mm x 150mm	Hot Dip Galv	20	9314691801534
OAB400X150M12	M12 400mm x 150mm	Hot Dip Galv	20	9314691801541
OAB450X150M12	M12 450mm x 150mm	Hot Dip Galv	20	9314691801558
OAB500X150M12	M12 500mm x 150mm	Hot Dip Galv	20	9314691801565

Note: Used to secure columns and posts to each other or to the fixed foundation.

Straight shank anchor bolt



Product Code	Description	Finish Type	Std Carton Qty	Barcode Number
SSAB300XM12X1	1x M12 hole 300mm	Hot Dip Galv	20	9314691801572
SSAB350XM12X1	1x M12 hole 350mm	Hot Dip Galv	20	9314691801589
SSAB400XM12X1	1x M12 hole 400mm	Hot Dip Galv	20	9314691801596
SSAB450XM12X1	1x M12 hole 450mm	Hot Dip Galv	20	9314691801602
SSAB500XM12X1	1x M12 hole 500mm	Hot Dip Galv	20	9314691801619
SSAB300XM12X2	2x M12 hole 300mm	Hot Dip Galv	20	9314691801626
SSAB350XM12X2	2x M12 hole 350mm	Hot Dip Galv	20	9314691801633
SSAB400XM12X2	2x M12 hole 400mm	Hot Dip Galv	20	9314691801640
SSAB450XM12X2	2x M12 hole 450mm	Hot Dip Galv	20	9314691801657
SSAB500XM12X2	2x M12 hole 500mm	Hot Dip Galv	20	9314691801664

Note: Used to secure columns and posts to each other or to the fixed foundation.

Tie down rod

Advans-Xtracote

Product Code	Description	Finish Type	Std Pack Qty	Barcode Number
M12ZTDR	450mm x 50mm x M12	<i>Advans-Xtracote</i>	25	9314691805549
M16ZTDR	450mm x 50mm x M16	<i>Advans-Xtracote</i>	25	9314691806829

Galvanised

Product Code	Description	Finish Type	Std Pack Qty	Barcode Number
M12GTDR	450mm x 50mm x M12	Galvanised	25	9314691806812
M16GTDR	450mm x 50mm x M16	Galvanised	25	9314691806836

Notes:

- Embedded in concrete base, used to assist in securing timber frames or other structures.
- Either zinc coated or hot dip galvanised to provide long term corrosive protection.

STANDARD TERMS & CONDITIONS OF SALE





All goods are supplied by ADVANSA PTY LTD (hereafter referred to as "the Seller") to its Customers (hereafter referred to as 'the Purchaser' on the following terms and conditions and expressly exclude any terms or conditions contained in the documents submitted by the Purchaser, unless specifically agreed to in writing by the Seller :-

1. SPECIFICATIONS

The Seller reserves the right to make any alteration or improvement to, or departure from any specification or design, unless otherwise agreed.

Please note that all goods are supplied by the Seller to the Purchaser for use only in applications and purposes for which they were originally designed. The Seller is not liable for any consequential loss whatsoever from improper or inappropriate use of the goods supplied, where the goods are used for purposes beyond or outside of the scope of application for which they were designed and which exceeds the designed performance limit. At all times please consult the Seller if unsure of the suitability of the goods for your intended application.

2. PRICES

All prices issued are unit prices unless otherwise specified. List prices and delivery charges are based on current costs and therefore subject to alteration without notice. All prices are subject to 10% GST on quoted prices.

3. PAYMENT

Standard trading terms are net 30 (thirty) days from date of delivery to the Purchaser once the Purchaser has an approved credit account with the Seller.

4. CANCELLATION

An accepted order cannot be cancelled except by mutual consent of the Purchaser and the Seller. All costs incurred up to the date of cancellation, including a 10% handling charge, will be charged to the Purchaser's account.

5. RETURNS

The Seller expressly disclaims liability for any consequential loss in relation to goods supplied to a customer. All goods should be checked on receipt. No claims for credit or replacement due to incorrect supply or quality non-conformances of the goods will be considered if not made within 14 (fourteen) days of receipt of the goods.

Goods returned because of errors or other deficiencies on the part of the Seller will be replaced. Goods which are non-standard products are non-returnable.

6. TIME OF DELIVERY

Every endeavour will be made by the Seller to comply with the estimated time of delivery, but in no case will the Seller be liable for loss or damage however caused by delay in delivery.

To assist with next day delivery in metro areas in SA, VIC and QLD, orders need to be placed prior to 1.00p.m. CST. Pick up in QLD after 2.00 p.m.

To place orders, please either fax (08) 8243 9185 or phone 1300 135 935.

7. TITLE TO GOODS

Title to goods will not pass to the Purchaser until the full price has been for the goods has been received in full by the Seller and all and any other outstanding amounts owing from the Purchaser to the Seller have been paid in full.

8. DELIVERY

All freight will be charged to the Purchaser's account, unless the Purchaser has made prior arrangements and both the Seller and Purchaser have agreed in writing. The Seller will despatch goods via their nominated carrier unless the Purchaser nominates a preferred carrier.

Should the Purchaser engage their own transport company for delivery of the goods supplied by the Seller, then that carrier or transport company will be deemed as the Purchaser' agent. All responsibility will be transferred to the Purchaser's agent when the goods have been signed for and leave the control of the Seller.

Pickups – times to be advised upon order. **Please be advised that safety shoes and high visibility vests are to be worn at warehouse sites.**

9. ORDER SIZES

All orders will be supplied in standard carton or pack quantities as specified by the Seller.

10. PRODUCT CODES

The Seller's product codes must be used at all times when ordering goods.

11. MINIMUM ORDER

Order(s) submitted by the Purchaser to the Seller must be to the minimum value of AU\$250 unless otherwise stated or confirmed in writing by the Seller to the Purchaser. \$6.50 minimum pick fee will apply to all orders under minimum order value. Freight charges are applicable to all orders under the minimum order value.





Hardware & Fastener Catalogue

WARRANTY

Our goods come with guarantees that cannot be excluded under the Australian Consumer Law. You are entitled to a replacement or refund for a major failure and compensation for any other reasonably foreseeable loss or damage. You are also entitled to have the goods repaired or replaced if the goods fail to be of acceptable quality and the failure does not amount to a major failure.

Advansa Pty Ltd TUFF Warranty Policy: The Warranty is for the period of 30 days from date of purchase on TUFF Builder's Hardware and Fastener products providing it is used for the purpose that it was designed for. Any repairs, alterations, modifications or misuse of the product will void the warranty. TUFF products will be replaced under warranty providing proof of purchase is supplied. No credits or replacements will be issued except with approval from Advansa Pty Ltd.

Should you wish to make a claim under this guarantee, the product and proof of purchase must be returned pre-paid by you to the place of purchase.

The Company will liaise with Advansa Customer Service (Ph: 08 8243 9100) as to the appropriate action for remedy, detailing

- Consumer name, address and contact number
- Product description, product code and warranty issue

Where appropriate, the Customer Service Department will advise the Company of the method to return the product to Advansa. The freight cost from Advansa's customer to Advansa will be at Advansa's expense. On receipt of the defective product, a replacement product will then be delivered to the Company at Advansa's expense.

All other related expenses will not be borne by Advansa.

The benefits to the consumer given by the warranty are in addition to other rights and remedies of the consumer under a law in relation to the goods to which the warranty relates.

Notes:





Hardware & Fastener Catalogue



Tuff

advansa 